



330B L 345B L

Ultra-high Demolition

CAT[®]

	330B L	345B L
Cat [®] turbocharged engine	3306 TA	3176C ATAAC
Gross power	176 kW/236 hp	233 kW/312 hp
Flywheel power	165 kW/222 hp	216 kW/290 hp
Operating weight range	45 140 kg/99,530 lb	59 000 kg/130,100 lb
Work tool	3000 kg/6,615 lb	3000 kg/6,615 lb

330B L and 345B L Ultra-high Demolition

Heavy-Duty purpose built for your demolition job.

Hydraulics

Auxiliary hydraulic flow control offers 4 programmable settings to precisely match hydraulic tool requirements. **pg. 3**

Undercarriage

Caterpillar® excavator undercarriage is stable, durable and low maintenance. Optional heavy-duty hydraulic variable undercarriage allows usage of heavier demolition tool. **pg. 3**

Operator Station

Roomy, quiet, automatically climate controlled cab has excellent sightlines to the work tool. **pg. 4-5**

Upper frame and counterweight

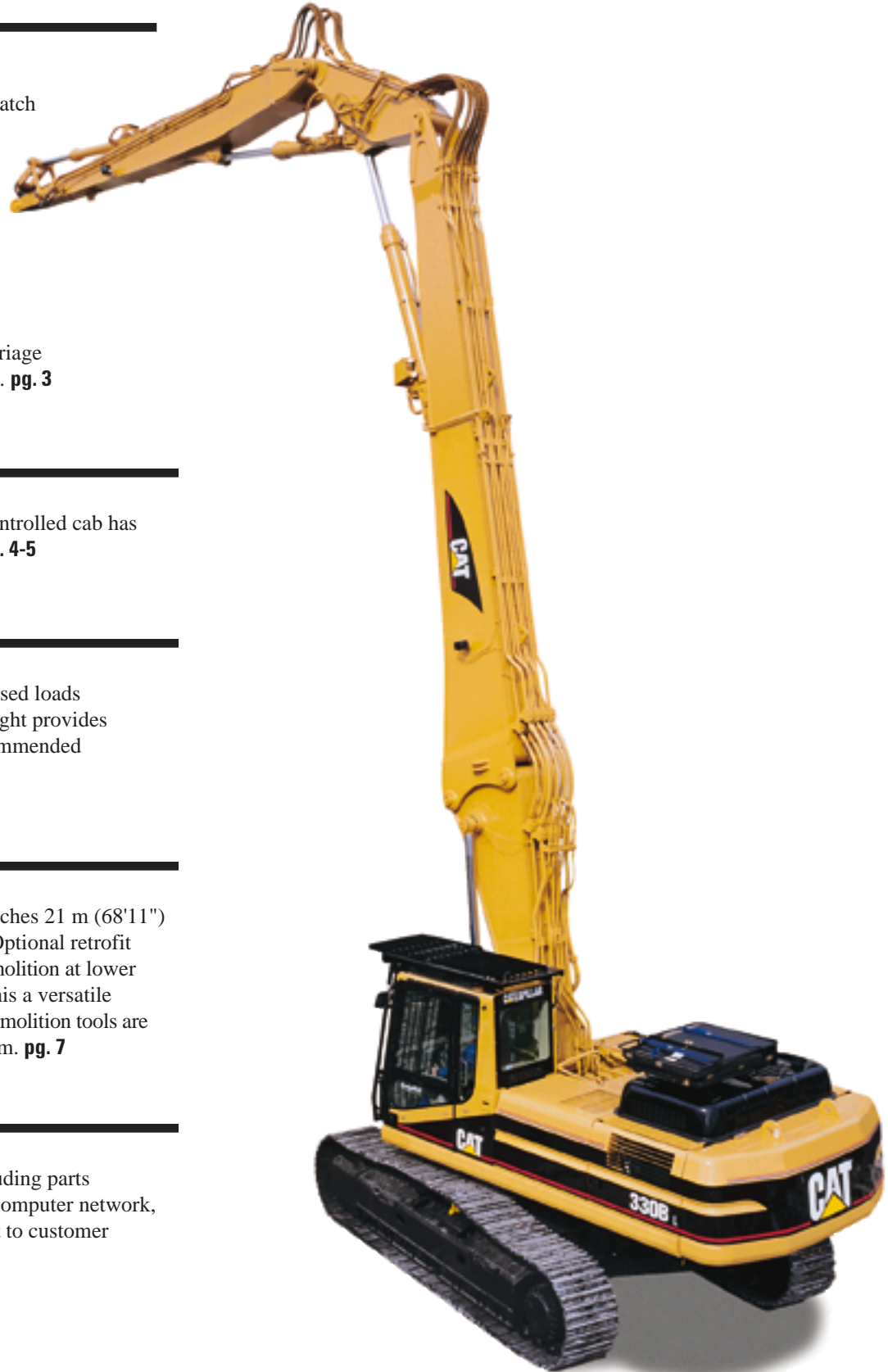
Heavy-duty upper frame handles increased loads and movements. Additional counterweight provides maximum stability throughout the recommended working range. **pg. 6**

Booms, sticks and working tools

3-piece Ultra-high Demolition front reaches 21 m (68'11") on 330B and 22.8 m (74'9") on 345B. Optional retrofit boom nose and demolition sticks for demolition at lower heights or normal digging truly make this a versatile machine for your job site. Caterpillar demolition tools are built to optimize the excavator/tool system. **pg. 7**

Serviceability/Customer Support

Many convenient service features, including parts availability supported by a worldwide computer network, enhance Caterpillar's total commitment to customer support. **pg. 8**



Hydraulics

Auxiliary flow is programmable for ease of switching hydraulic tools.

Dramatically increased control responsiveness aids operation and improves controllability at higher heights.

- Control movements are better matched to hydraulic action for improved operator performance.
- Improved swing damping restrains drift and improves positioning reducing operator fatigue.
- Pilot pump flow is dramatically increased for superior multi-function actuation control.

Fine swing control cushions swing start and stop for better implement control.



Auxiliary hydraulic flow control system provides four programmable flow presets to precisely match hydraulic tool requirements. 2 presettings are available for 2-way hydraulic tools as rotating crushers and steel shears; the other 2 available presettings are reserved for 1-way hydraulic tools as hammers.



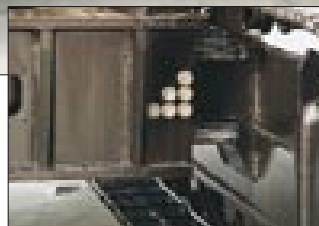
Undercarriage

Durable undercarriage absorbs stresses and provides excellent stability.

The L undercarriage provides a stable and rugged working platform for demolition.

Full length track guiding guards complete the machine's guarding package.

The optional hydraulic adjustable undercarriage increases the stability by lowering the center of gravity of the machine, resulting in the usage of a bigger tool. The non-bolt joint allows changing from shipping to working width or reverse in less than a minute.



Operator Station

Designed for comfort and ease of operation.





This operator work station is quiet with ergonomic control placement and convenient adjustments, low lever and pedal effort, ergonomic seat design, and highly efficient ventilation. The result is a cab that puts the operator firmly and comfortably in control to enhance productivity.

High visibility cab with the front window made out of laminated safety glass. For enhanced upward visibility, the top window extends completely to the front. The front window is one-piece and flat with top and bottom mounted wipers. The upper left side door window can slide open. The lower window provides visibility to the tracks and to the ground next to the machine. The rear window offers a good view behind and to the left, aided by a lower hood profile.

Falling object guard on the top and front is standard. Crossbars of top guard are angled in line with sight for enhanced visibility to the tool.

Greater control convenience. Each of the controls is positioned within easy reach of the operator.

1 Caterpillar Electronic Control System panel includes fuel level, hydraulic oil temperature and engine temperature gauges, machine condition indicators, and operator controls in a single console.

2 Automatic climate control maintains constant temperature in the cab in both hot and cold weather conditions.

3 Joysticks control all implements and swing functions with minimal effort. Ready to go auxiliary controls for use with rotating concrete crusher/steel shear. The integrated joystick consoles adjust to operator preference. Joystick consoles are suspended as part of the seat arrangement. Height can be adjusted independently of the seat.

4 Dial throttle with ten settings for simple, precise repeatable engine speed adjustment.

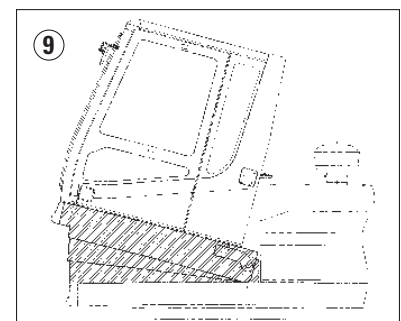
5 Hand or foot actuated travel controls allow the operator to move the excavator while working the boom, stick and bucket. Hand levers can easily be removed to improve sight.

6 Optional straight travel pedal provides forward or reverse straight line travel. Steering adjustments can be made by using right or left travel pedals in combination with the straight travel pedal.

7 Hydraulic activation control lever deactivates hydraulic functions and prevents start-up when the operator exits the cab.

8 The fully adjustable suspension seat includes an impressive range of comfort features. In addition to fore/aft height and weight adjustments, it also offers lumbar, wide arm support/rests and a retractable seat belt.

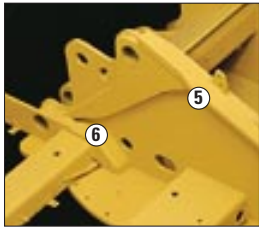
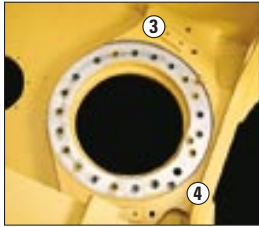
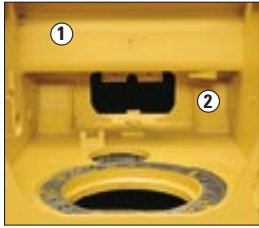
9 Hydraulically tilting cab support allows the cab to be tilted backward from 0 to 15 degrees to further improve upward visibility. This optional equipment allows the operator to adopt a more comfortable body position. The tiltable cab support platform, which is operated via a key switch, is a 30 cm (12") high insert between skirt and cab. It also moves the cab 20 cm (8") forward to create the space for a tilt angle of 15 degrees.



Upper frame and Counterweight

Purpose built for extreme conditions.

**Heavy-duty
Upper Frame**



**Standard
Upper Frame**



1 Box-section cross member

2 Box-section cylinder mounts help handle increased torsional loads and payloads.

3 Horizontal mounting plate provides up to 75% more surface area for swing drive and swing bearing mounting bolts.

4 Thicker main rail spreader gussets handle increased loads and movements.

5 Steel main frames are 15-20% thicker with a 55% increase in tensile strength.

6 Boom tower vertical doubler plates add reinforcement for increased side loads and payloads.

Standard



Heavy-duty



Swing bearing to upper frame bolts are 20 mm (0.8") longer on the back half of upper frame for increased joint retention. Bolt grade is increased from 10.9 to 11.9 for increased bolt torque of swing bearing to upper frame and carbody.

Heavier counterweight balances the swing bearing and provides enhanced stability.

- 330B L – 8330 kg (18,370 lb)
- 345B L – 11 000 kg (24,255 lb)

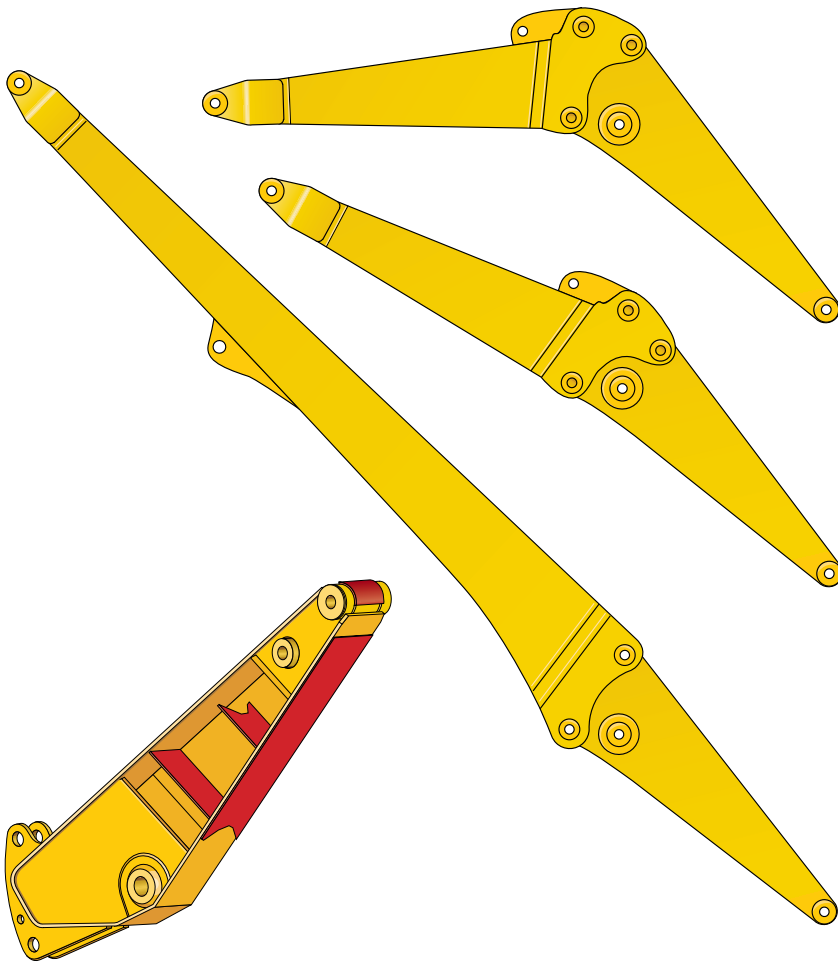


Upper frame protection

- **Heavy-duty bottom and swivel** guards are standard.
- **Optional additional bumpers** help protect the sheet metal against debris caught by the tracks.

Booms, Sticks and Working Tools

Maximum versatility gets the best out of your machine.



2 piece main boom with pin-mounted joint between boom foot and boom nose.

Retrofit capability with short 2-position boom nose on boom foot for clean-up, demolition (hammer use) and digging. This adds to the machine's extreme versatility by allowing the retrofit boom nose to be mounted in a straight (demolition) or bent (digging) position.

Special stand to support long boom or short retrofit boom when changing configuration.

Purpose built demolition sticks

match the short boom nose

- additional internal reinforcements to support mechanical shears or thumb buckets
- heavier plates
- 12 mm (0.47") bottom wear plate
- through hardened bores

B family bucket linkage on 330B

C family bucket linkage on 345B

Lowering control devices are installed on all boom and stick cylinders.

An electronic warning device

signals the operator when the main boom gets out of the recommended working range.

Choose from a variety of Caterpillar work tools such as concrete crushers and pulverizers, steel shears, demolition grapples, hydraulic hammers and quick couplers.

Complete Customer Support

Cat dealer services help you operate longer with lower costs.



Your Cat dealer offers a wide range of services that can be set up under a customer support agreement when you purchase your equipment. To help you get the best return on your investment, the dealer will help you choose a plan that can cover everything from machine and attachment selection to replacement.

Selection. Make detailed comparisons of the machines you are considering before you buy. What are the job requirements? What production is needed? What is the true cost of lost production? Your Cat dealer can give you precise answers to these questions.

Purchase. Look past initial price. Consider the financing options available as well as day-to-day operating costs. This is also the time to look at dealer services that can be included in the cost of the machine to yield lower equipment owning and operating costs over the long run.

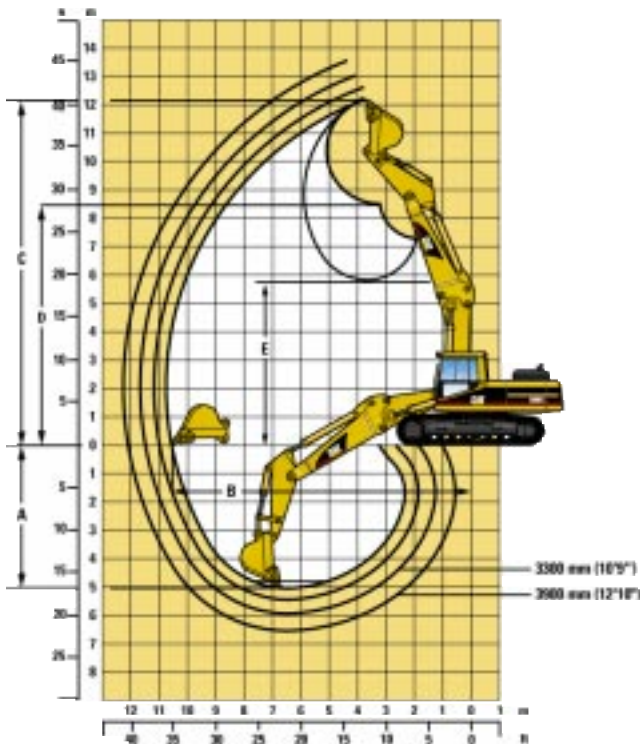
Operation. Improving operating techniques can boost your profits. Your Cat dealer has training videotapes, literature and other ideas to help you increase productivity.

Maintenance. What is the cost of preventive maintenance? More and more equipment buyers are planning for effective maintenance before buying equipment. Choose from your dealer's wide range of maintenance services at the time you purchase your machine. Repair option programs guarantee the cost of repairs up front. Diagnostic programs such as Scheduled Oil Sampling and Technical Analysis help you avoid unscheduled repairs.

Replacement. Repair, rebuild or replace? Your Cat dealer can help you evaluate the cost involved so you can make the right choice.

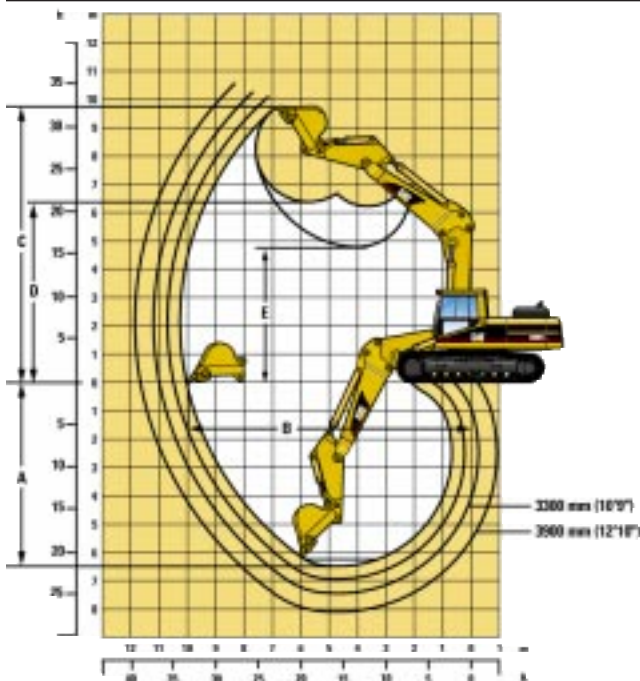
Product support. You will find nearly all parts at our dealer parts counter. Cat dealers utilize a worldwide computer network to find in-stock parts to minimize machine down time. Save money with remanufactured parts. You receive the same warranty and reliability as new products at cost savings of 40 to 70 percent.

330B L Working Ranges – Straight Position



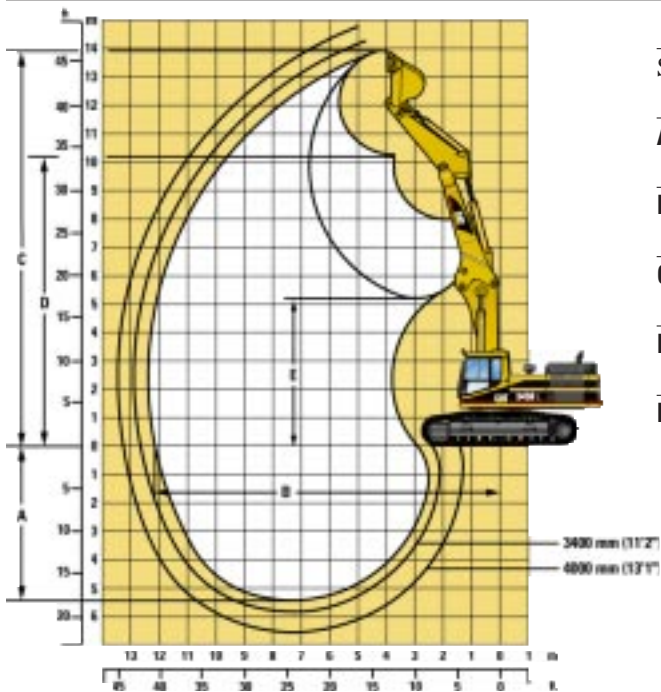
	R3.9D	R3.3D
Stick Length	3.9 m (12'10")	3.3 m (10'9")
A Maximum Digging Depth	6.55 m (21'6")	5.95 m (19'6")
B Maximum Reach at Ground Level	12.14 m (39'10")	11.54 m (37'10")
C Maximum Cutting Height	13.57 m (44'6")	13.04 m (42'9")
D Maximum Loading Height	10.26 m (33'8")	9.73 m (31'11")
E Minimum Loading Height	5.83 m (19'1")	6.38 m (20'11")

330B L Working Ranges – Bent Position



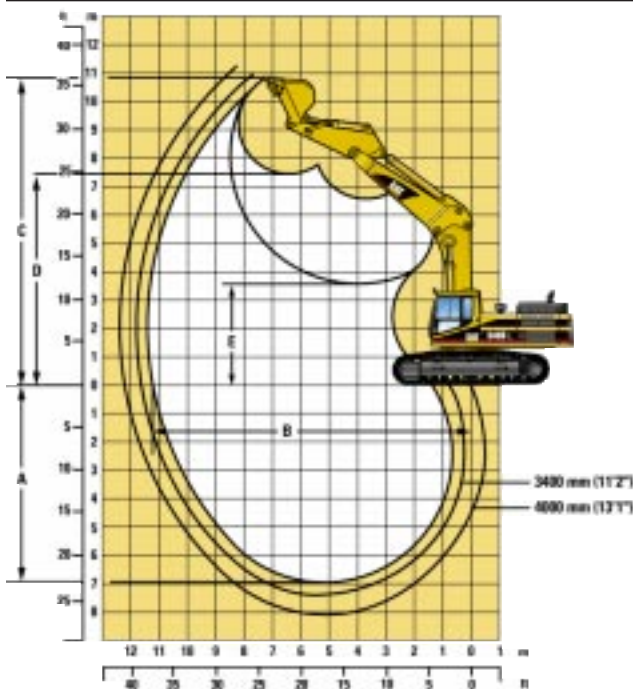
	R3.9D	R3.3D
Stick Length	3.9 m (12'10")	3.3 m (10'9")
A Maximum Digging Depth	8.05 m (26'5")	7.45 m (24'5")
B Maximum Reach at Ground Level	11.53 m (37'10")	10.93 m (35'10")
C Maximum Cutting Height	10.56 m (34'8")	10.26 m (33'8")
D Maximum Loading Height	7.45 m (24'5")	7.16 m (23'6")
E Minimum Loading Height	4.77 m (15'8")	5.31 m (17'5")

345B L Working Ranges – Straight Position



	R4.0	R3.4
Stick Length	4.0 m (13'1")	3.4 m (11'2")
A Maximum Digging Depth	6.51m (21'4")	5.86 m (19'3")
B Maximum Reach at Ground Level	13.23 m (43'5")	12.64 m (41'6")
C Maximum Cutting Height	14.79 m (48'6")	14.27 m (46'10")
D Maximum Loading Height	11.48 m (37'8")	10.53 m (34'6")
E Minimum Loading Height	4.1 m (13'5")	4.74 m (15'6")

345B L Working Ranges – Bent Position



	R4.0	R3.4
Stick Length	4.0 m (13'1")	3.4 m (11'2")
A Maximum Digging Depth	8.07 m (26')	7.42 m (24'4")
B Maximum Reach at Ground Level	12.20 m (40')	11.60 m (38'1")
C Maximum Cutting Height	11.24 m (36'10")	10.97 m (36')
D Maximum Loading Height	7.75 m (25'5")	7.51 m (24'8")
E Minimum Loading Height	2.33 m (7'8")	2.98 m (9'9")

Standard Equipment

Standard and optional equipment may vary. Consult your Caterpillar dealer for specifics.

Air precleaner	Gauges and indicator lights for fuel level, coolant temperature and hydraulic oil temperature	Heavy duty underhouse
Alternator, 52-amp	Light, interior	High ambient cooling
Automatic engine speed control	Literature compartment	Hydraulic neutralizer lever for all controls
Automatic swing parking brake	Lowering control devices	Lights, working
Auxiliary outletport on tank with screen	Low fuel indicator light	Frame mounted, one
Bucket linkage	Joysticks, adjustable pilot-operated	Boom, both sides
B family on 330B	Prewired radio mounting	Cab mounted, two
C family on 345B	Positive filtered ventilation	Mirrors, frame and cab
Cat engines:	Seat belt, retractable	Muffler
330B L – 3306 TA diesel engine with 24-volt electric starting and air intake heater	Seat, suspension, fully adjustable	Pre-start monitoring system
345B L – 3176 ATAAC diesel engine with 24-volt electric starting and air intake heater	Stationary skylight	Polycarbonate and glass windows
High visibility cab	Storage compartment suitable for a lunch box cooler	Power Mode Selector
Air conditioner with automatic climate control	Travel control pedals	Power train
Ash tray with cigar lighter	Two-speed auto shift travel	Return filter clogging alarm
Coat hook	Windshield wiper and washer	Water separator
Drink holder	Combined auxiliary hydraulic circuit	Work Mode Selector
Floor mat	Counterweight	Undercarriage
Heater and defroster	Door locks and caps locks with Caterpillar one-key security system	Hydraulic track adjusters
Horn	Falling object guard, top and front	Track-type sealed undercarriage
Instrument panel with gauges	Fine swing control	330B L –
	Full length track guiding guards	750 mm (30") triple-grouser shoes
	Fully pressurized hydraulic system	345B L –
	Heavy duty bottom guards	600 mm (24") triple-grouser shoes

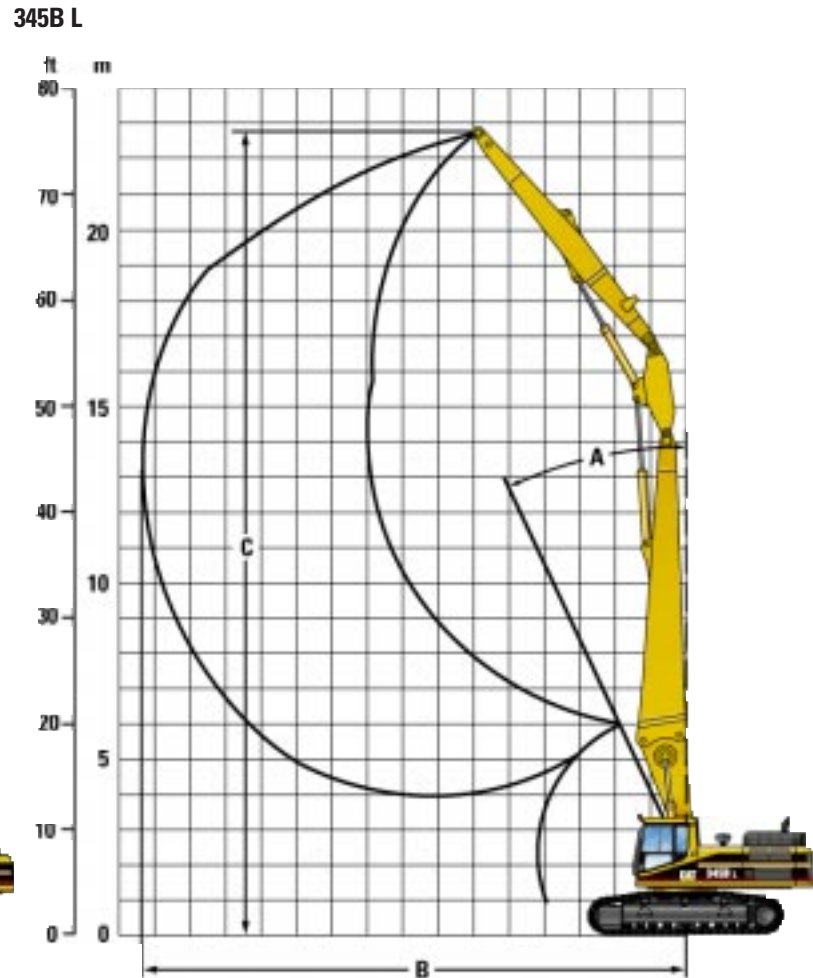
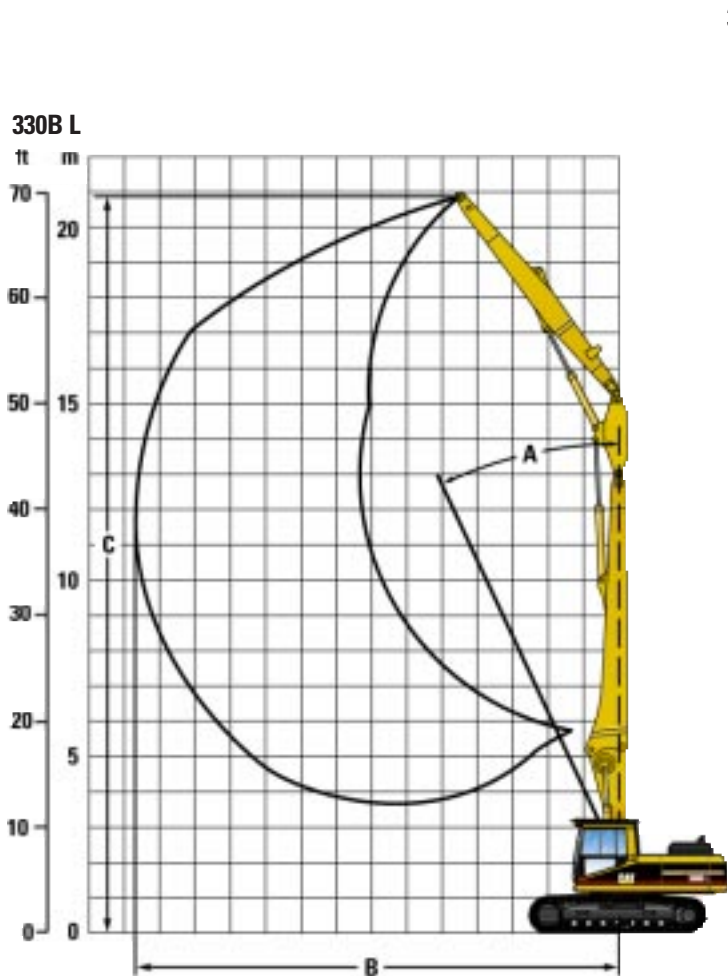
Optional Equipment

(with approximate change in operating weight)

Hydraulically tilting cab support	Track 345B L
Refueling pump	600 (24") mm heavy duty double-grouser shoes
Starting aid, cold weather	600 (24") mm heavy duty triple-grouser shoes
Starting aid, ether	750 (30") mm heavy duty triple-grouser shoes
Straight travel third pedal option	900 (35") mm triple-grouser shoes
Sun screen	Undercarriage
Track 330B L:	Hydraulic wide gauge (330B and 345B)
600 mm (24") triple-grouser shoes	
600 mm (24") heavy duty triple-grouser shoes	
750 mm (30") heavy duty triple-grouser shoes	
850 mm (33") triple-grouser shoes	

Shipping Dimensions and Recommended Working Range Ultra-high Demolition – Front Parts

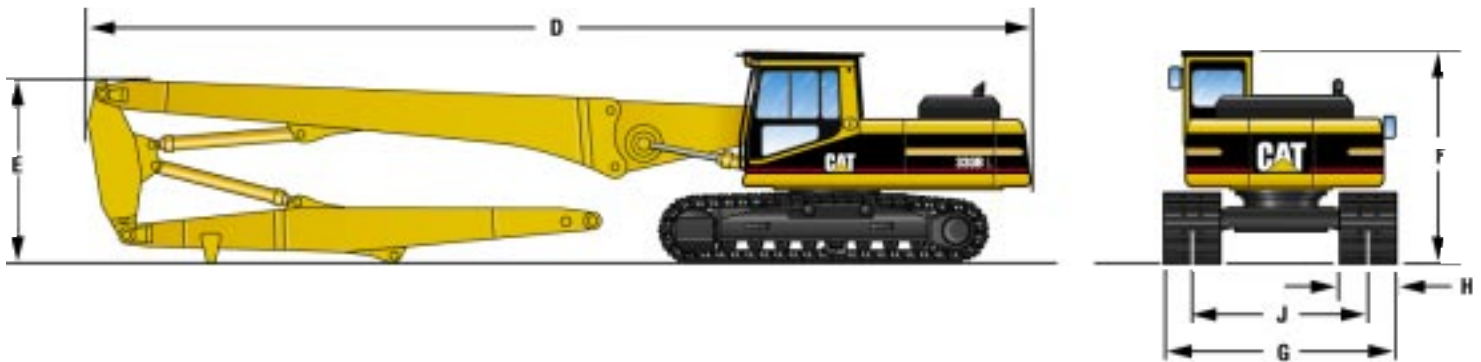
All dimensions and weights are approximate.



	330B	345B
A Maximum allowable angle from vertical	25°	25°
B Maximum allowable horizontal reach	13.8 m (45'3")	15.3 m (50'2")
C Maximum vertical pin height	20.9 m (68'7")	22.8 m (74'9")
Maximum tool weight*		
with L undercarriage	2300 kg (5,072 lb)	2300 kg (5,072 lb)
with hydraulic wide gauge undercarriage	3000 kg (6,615 lb)	3000 kg (6,615 lb)

* Design of the mounting bracket is critical. Weight includes mounting bracket and Quick Coupler (if any).

Range is applicable in 360° and dependent on undercarriage choice and maximum weight of work tool.



	330B	345B
D Overall length	14.90 m (48'10")	16.25 m (53'4")
E Boom height	2.90 m (9'6")	3.44 m (11'3")
F Cab height*		
with Falling Object Guard	3.34 m (10'11")	3.67 m (12'0")
without Falling Object Guard	3.15 m (10'4")	3.48 m (11'5")
G Overall width	3.34 m (10'11")	3.49 m (11'5")
H Track shoe width	0.75 m (2'6")	0.60 m (2'0")
J Track gauge	2.59 m (8'6")	
Fully retracted		2.39 m (7'10")
Fully extended		2.89 m (9'6")
Weight**	39 570 kg (87,252 lb)	52 640 kg (116,071 lb)

* Cab height must be increased by 0.3 m when equipped with hydraulically tiltable cab.

**If equipped with super-long demolition front part, "B" linkage, "High Visibility" Eurocab, falling object guard, heavy duty long undercarriage, triple grouser track shoes and without tool.

With Hydraulic Wide Undercarriage (if equipped)

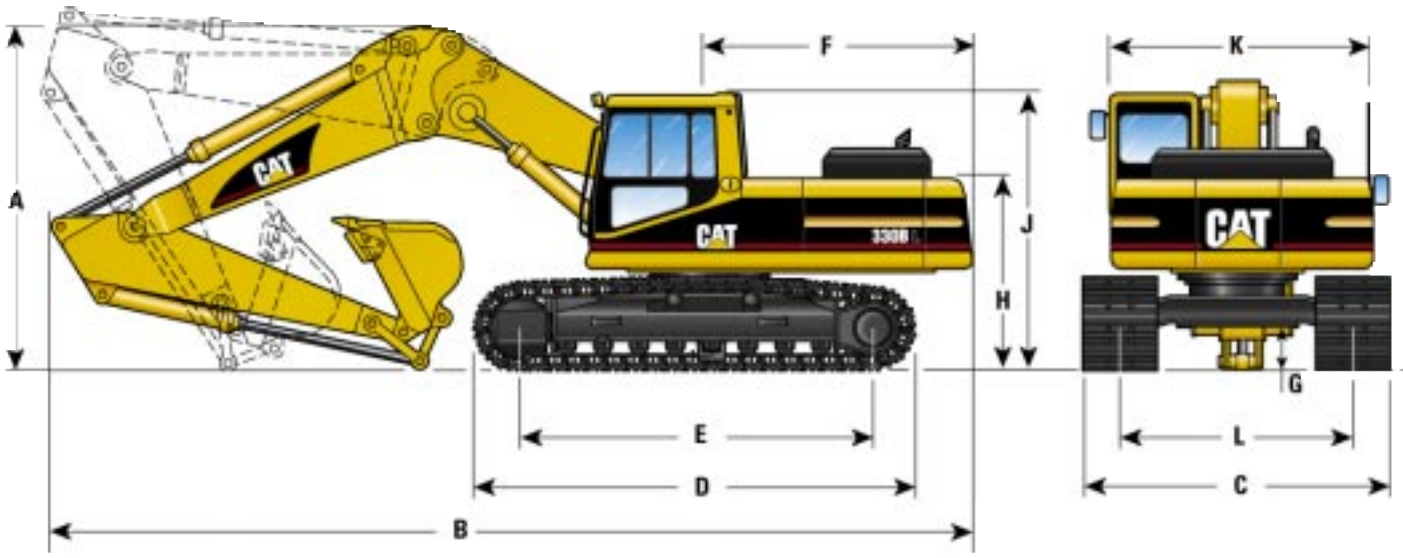
	330B	345B
H Track shoe width	0.75 m (2'6")	0.60 m (2'0")
G Overall width		
Fully retracted	3.15 m (10'4")	3.00 m (9'10")
Fully extended	3.55 m (11'8")	3.60 m (11'10")
J Track gauge		
Fully retracted	2.40 m (7'10")	2.40 m (7'10")
Fully extended	2.80 m (9'2")	3.00 m (9'10")
Weight*	45 140 kg (99,534 lb)	59 000 kg (130,095 lb)

* If equipped with ultra-high demolition front part, corresponding linkage, "High Visibility" Eurocab, falling object guard, triple grouser track shoes, heavy duty long hydraulic wide undercarriage and without tool.

For information on specifications for configurations other than those included in the above charts, consult your Caterpillar dealer.

Dimensions and Weights – Straight and Bent Position

All dimensions and weights are approximate.



A Boom Height	330B L		345B L	
Straight Position				
stick	R3.30D	3.85 m (12'8")	R3.4T	3.78 m (12'5")
stick	R3.90D	4.30 m (14'1")	R4.0T	3.99 m (13'1")
Bent Position				
stick	R3.30D	4.15 m (13'7")	R3.4T	4.21 m (13'10")
stick	R3.90D	4.36 m (14'4")	R4.0T	4.06 m (13'4")
B Overall Length				
Straight Position				
stick	R3.30D	11.65 m (38'3")	R3.4T	12.45 m (40'10")
stick	R3.90D	11.50 m (37'9")	R4.0T	12.41 m (40'8")
Bent Position				
stick	R3.30D	11.26 m (36'11")	R3.4T	11.73 m (38'6")
stick	R3.90D	11.35 m (37'3")	R4.0T	11.68 m (38'4")
C Overall width 600 mm shoes		3.19 m (10'6")		2.99 m (9'10")
D Track length		5.02 m (16'6")		5.37 m (17'7")
E Length to centers of rollers		4.04 m (13'3")		4.34 m (14'3")
F Tail swing radius		3.50 m (11'6")		3.65 m (12'0")
G Ground clearance		0.51 m (1'8")		0.71 m (2'4")
H Body height		2.26 m (7'5")		2.53 m (8'4")
J Cab height				
with Falling Object Guard		3.34 m (10'11")		3.67 m (12'0")
without Falling Object Guard		3.15 m (10'4")		3.48 m (11'5")
K Body width		3.00 m (9'10")		2.99 m (9'10")
L Track gauge		2.59 m (8'6")	2.39 m (7'10") to 2.89 m (9'6")	
Weight*	36 700 (80,924 lb) - 37 070 kg (81,739 lb)		51 390 (113,315 lb) - 52 245 kg (115,200 lb)	
With Hydraulic Wide Undercarriage (if equipped)		330B L		345B L
C Overall width 600 mm shoes				
Shipping width		3.00 m (9'10")		3.00 m (9'10")
Working width		3.45 m (11'4")		3.60 m (11'10")
L Track gauge				
Fully retracted		2.40 m (7'10")		2.40 m (7'10")
Fully extended		2.85 m (9'4")		3.00 m (9'10")
Weight**	42 270 kg (93,205 lb) - 42 640 kg (94,021 lb)		57 750 (127,339 lb) to 59 345 kg (130,856 lb)	

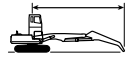
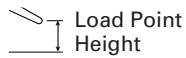
* If equipped with retrofit-straight boom front part, linkage, "High Visibility" Eurocab, falling object guard, heavy duty long undercarriage, 600 mm (24") triple grouser track shoes, stick and bucket [1.2 m³ (1.6 yd³) on 330B, 2.0 m³ (2.6 yd³) on 345B].

**If equipped with retrofit-bent boom front part, "High Visibility" Eurocab, falling object guard, linkage, 600 mm (24") triple grouser track shoes, stick, heavy duty long hydraulic wide undercarriage, bucket: [1.2 m³ (1.6 yd³) on 330B, 2.0 m³ (2.6 yd³) on 345B].

For information on specifications for configurations other than those included in the above charts, consult your Caterpillar dealer.

330B L Lift Capacities – Straight Position

3.9 m (12'10") stick (139-0447) with bucket (128-3144)



Load at
Maximum Reach



Load Radius
Over Front



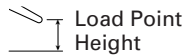
Load Radius
Over Side

Load Point Height	3.0 m/10.0 ft		4.5 m/15.0 ft		6.0 m/20.0 ft		7.5 m/25.0 ft		9.0 m/30.0 ft		10.5 m/35.0 ft		m ft		
	kg	lb	kg	lb	kg	lb	kg	lb	kg	lb	kg	lb	kg	lb	
10.5 m 35.0 ft					*7200 *14,700	*7200 *14,700							*4100 *9500	*4100 *9500	6.85 21.76
9.0 m 30.0 ft					*7600 *16,800	*7600 *16,800	*6800 *14,100	6300 13,400					*3400 *7700	*3400 *7700	8.39 27.14
7.5 m 25.0 ft					*7500 *16,600	*7500 *16,600	*7600 *16,700	6400 13,600	*5700 *10,700	4300 9100			*3100 *6900	*3100 *6900	9.45 30.78
6.0 m 20.0 ft					*8100 *17,900	*8100 *17,900	*7900 *17,300	6300 13,400	*6900 *15,200	4300 9200			*2900 *6600	*2900 *6600	10.18 33.28
4.5 m 15.0 ft			*11 700 *24,800	*11 700 *24,800	*10 200 *22,200	8900 19,100	*8400 *18,300	6000 12,800	7100 15,100	4200 8900	*4300 *9460	2900 6380	*2900 *6400	2800 6200	10.65 34.89
3.0 m 10.0 ft			*15 500 *33,700	13 000 28,000	*11 300 *24,600	8200 17,600	*8900 *19,500	5600 12,000	6900 *14,700	4000 8500	5100 *11,000	2900 6100	*3000 *6500	2600 5800	10.89 35.72
1.5 m 5.0 ft			*16 800 *36,600	11 700 25,200	*12 000 *26,200	7500 16,200	9100 *19,400	5300 11,300	6700 14,300	3800 8100	5100 10,800	2800 5900	*3100 *6900	2600 5600	10.92 35.83
0.0 m 0.0 ft			*14 000 *33,100	11 000 23,600	*12 100 *26,400	7100 15,200	8700 18,800	5000 10,700	6500 13,900	3700 7800	5000 *9500	2700 5800	*3300 *7400	2600 5800	10.74 35.24
-1.5 m -5.0 ft		*7300 *16,600	*7300 *16,600	*15 100 *32,900	10 800 23,200	*11 400 *24,800	6900 14,700	8600 18,400	4800 10,400	6400 13,700	3600 7700		*3700 *8300	2800 6200	10.34 33.89
-3.0 m -10.0 ft		*11 800 *26,900	*11 800 *26,900	*12 600 *27,500	10 900 23,300	*9900 *21,400	6800 14,700	*7600 *16,300	4800 10,300	*5400 *11,300	3600 7700		*3900 *8600	3200 7200	9.69 31.69
-4.5 m -15.0 ft				*9100 *19,600	*9100 *19,600	*7300 *15,600	7000 15,100	*5300 *11,000	4900 10,700						

* Indicates that the load is limited by hydraulic capacity rather than tipping capacity. Lift capacity ratings are based on SAE standard J1097. Rated loads do not exceed 87% of hydraulic lifting capacity or 75% of tipping capacity.

330B L Lift Capacities – Straight Position

3.3 m (10'10") stick (139-0448) with bucket (128-3144)



Load at
Maximum Reach



Load Radius
Over Front



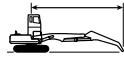
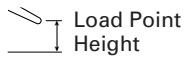
Load Radius
Over Side

Load Point Height	3.0 m/10.0 ft		4.5 m/15.0 ft		6.0 m/20.0 ft		7.5 m/25.0 ft		9.0 m/30.0 ft		m ft			
	kg	lb	kg	lb	kg	lb	kg	lb	kg	lb	kg	lb		
10.5 m 35.0 ft											*5300 *12,200	*5300 *12,200	5.84 18.31	
9.0 m 30.0 ft					*8900 *19,500	*8900 19,500	*5200 *5200				*4300 *9600	*4300 *9600	7.59 24.47	
7.5 m 25.0 ft					*9200 *20,100	*9200 20,100	*8000 *17,600	6200 13,100			*3800 *8600	*3800 *8600	8.75 28.46	
6.0 m 20.0 ft			*9900 *21,600	*9900 21,600	*9800 *21,400	9100 19,600	*8300 *18,100	6000 12,900	7000 *14,600	4100 8700	*3600 *8100	3600 7900	9.54 31.15	
4.5 m 15.0 ft			*14 300 *30,900	13 900 30,000	*10 700 *23,300	8600 18,400	*8700 *19,000	5800 12,400	6900 14,800	4000 8600	*3600 *8000	3100 6900	10.04 32.86	
3.0 m 10.0 ft			*16 200 *35,200	12 400 26,700	*11 700 *25,300	7900 17,000	*9100 19,900	5500 11,700	6700 14,400	3900 8300	*3700 *8100	2900 6400	10.29 33.75	
1.5 m 5.0 ft			*13 100 *32,100	11 300 24,200	*12 100 *26,400	7300 15,800	8900 19,100	5100 11,000	6600 14,100	3700 8000	*3900 *8500	2800 6200	10.32 33.87	
0.0 m 0.0 ft			*13 000 *30,700	10 800 23,200	*11 900 *25,900	7000 15,000	8700 18,600	4900 10,500	6400 13,800	3600 7700	*4200 *9300	2900 6400	10.13 33.23	
-1.5 m -5.0 ft		*7700 *17,700	*7700 17,700	*13 900 *30,400	10 800 23,100	*10 900 *23,700	6800 14,600	*8400 *18,200	4800 10,300	*6200 *13,300	3600 7700	*4700 *10,500	3200 7000	9.70 31.80
-3.0 m -10.0 ft				*11 100 *24,100	10 900 23,500	*9000 *19,400	6900 14,800	*6800 *14,600	4800 10,400	*4000 *8700	3700 8200	*4000 *8700	3700 8200	9.00 29.45
-4.5 m -15.0 ft					*5900 *12,400	*5900 *12,400								

* Indicates that the load is limited by hydraulic capacity rather than tipping capacity. Lift capacity ratings are based on SAE standard J1097. Rated loads do not exceed 87% of hydraulic lifting capacity or 75% of tipping capacity.

330B L Lift Capacities – Bent Position

3.9 m (12'10") stick (139-0447) with bucket (128-3144)



Load at Maximum Reach



Load Radius Over Front



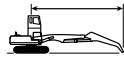
Load Radius Over Side

Stick Length / Height	Unit	1.5 m/5.0 ft		3.0 m/10.0 ft		4.5 m/15.0 ft		6.0 m/20.0 ft		7.5 m/25.0 ft		9.0 m/30.0 ft		m ft		
		Over Front	Over Side	Over Front	Over Side	Over Front	Over Side	Over Front	Over Side	Over Front	Over Side	Over Front	Over Side			
9.0 m / 30.0 ft	kg / lb									*3500 / *7700	*3500 / *7700			*3200 / *7200	*3200 / *7200	7.56 / 24.35
7.5 m / 25.0 ft	kg / lb													*3000 / *6600	*3000 / *6600	8.72 / 28.36
6.0 m / 20.0 ft	kg / lb									*5900 / *13,000	*5900 / *13,000	*5300 / *10,200	4500 / 9500	*2900 / *6400	*2900 / *6400	9.51 / 31.06
4.5 m / 15.0 ft	kg / lb									*6600 / *14,400	6300 / 13,500	*6000 / *13,200	4400 / 9300	*3000 / *6600	*3000 / *6600	10.01 / 32.77
3.0 m / 10.0 ft	kg / lb			*18 500 / *43,100	*18 500 / *43,100	*12 100 / *26,200	*12 100 / *26,200	*9000 / *19,600	8700 / 18,600	*7400 / *16,200	5900 / 12,700	*6500 / *14,200	4200 / 8900	*3100 / *6900	3100 / 6900	10.26 / 33.66
1.5 m / 5.0 ft	kg / lb					*14 800 / *32,100	12 400 / 26,600	*10 500 / *22,800	8000 / 17,100	*8300 / *18,000	5500 / 11,900	*14,600 / *32,000	4000 / 8500	*3400 / *7600	3000 / 6600	10.29 / 33.78
0.0 m / 0.0 ft	kg / lb			*8300 / *19,000	*8300 / *19,000	*16 300 / *35,500	11 400 / 24,600	*11 500 / *25,100	7400 / 15,900	*8900 / *19,300	5200 / 11,100	6600 / 14,200	3800 / 8100	*3900 / *8600	3000 / 6600	10.10 / 33.14
-1.5 m / -5.0 ft	kg / lb	*7900 / *17,700	*7900 / *17,700	*11 700 / *26,600	*11 700 / *26,600	*16 700 / *36,300	11 000 / 23,700	*12 000 / *26,100	7100 / 15,200	8700 / 18,700	5000 / 10,700	6500 / 13,900	3700 / 7800	*4600 / *10,200	3200 / 7100	9.67 / 31.71
-3.0 m / -10.0 ft	kg / lb	*11 700 / *26,300	*11 700 / *26,300	*16 200 / *36,700	*16 200 / *36,700	*16 100 / *35,000	10 900 / 23,500	*11 800 / *25,600	6900 / 14,900	8600 / 18,500	4900 / 10,500			*5800 / *12,900	3700 / 8100	8.97 / 29.35
-4.5 m / -15.0 ft	kg / lb	*16 100 / *36,200	*16 100 / *36,200	*20 500 / *44,500	*20 500 / *44,500	*14 400 / *31,200	11 100 / 23,900	*10 700 / *23,100	7000 / 15,100	*7900 / *16,900	5000 / 10,700			*7100 / *15,900	4600 / 10,200	7.93 / 25.81
-6.0 m / -20.0 ft	kg / lb			*15 500 / *33,000	*15 500 / *33,000	*11 200 / *23,700	*11 200 / *23,700	*7900 / *16,500	7300 / 15,900					*7100 / *15,700	6700 / 15,300	6.37 / 20.48

* Indicates that the load is limited by hydraulic capacity rather than tipping capacity. Lift capacity ratings are based on SAE standard J1097. Rated loads do not exceed 87% of hydraulic lifting capacity or 75% of tipping capacity.

330B L Lift Capacities – Bent Position

3.3 m (10'10") stick (139-0448) with bucket (128-3144)



Load at Maximum Reach



Load Radius Over Front



Load Radius Over Side

Stick Length / Height	Unit	1.5 m/5.0 ft		3.0 m/10.0 ft		4.5 m/15.0 ft		6.0 m/20.0 ft		7.5 m/25.0 ft		9.0 m/30.0 ft		m ft		
		Over Front	Over Side	Over Front	Over Side	Over Front	Over Side	Over Front	Over Side	Over Front	Over Side	Over Front	Over Side			
7.5 m / 25.0 ft	kg / lb									*6200 / *12,200	*6200 / *12,200			*3700 / *8100	*3700 / *8100	8.03 / 26.06
6.0 m / 20.0 ft	kg / lb									*6500 / *14,200	6300 / 13,500			*3600 / *8000	*3600 / *8000	8.88 / 28.98
4.5 m / 15.0 ft	kg / lb							*8200 / *17,900	*8200 / *17,900	*7100 / *15,400	6100 / 13,000	*6400 / *12,400	4200 / 8900	*3700 / *8100	*3700 / *8100	9.41 / 30.81
3.0 m / 10.0 ft	kg / lb					*13 300 / *28,700	13 200 / 28,500	*9700 / *21,000	8400 / 18,000	*7800 / *17,100	5700 / 12,300	*6800 / *14,800	4000 / 8600	*3900 / *8600	3400 / 7600	9.68 / 31.75
1.5 m / 5.0 ft	kg / lb					*15 600 / *33,900	11 900 / 25,600	*11 000 / *23,900	7700 / 16,600	*8600 / *18,700	5400 / 11,500	6700 / 14,400	3900 / 8300	*4300 / *9500	3300 / 7300	9.72 / 31.88
0.0 m / 0.0 ft	kg / lb			*7700 / *17,700	*7700 / *17,700	*16 600 / *36,100	11 200 / 24,000	*11 800 / *25,700	7200 / 15,500	8900 / 19,000	5100 / 10,900	6500 / 14,000	3700 / 7900	*4900 / *10,900	3300 / 7400	9.51 / 31.21
-1.5 m / -5.0 ft	kg / lb	*20,500 / *45,500	*20,500 / *45,500	*12 600 / *28,600	*12 600 / *28,600	*16 500 / *35,900	10 900 / 23,400	*12 000 / *26,100	7000 / 15,000	8700 / 18,600	4900 / 10,500	6500 / 14,200	3600 / 7800	*5900 / *13,200	3600 / 7900	9.05 / 29.67
-3.0 m / -10.0 ft	kg / lb	*13 700 / *30,800	*13 700 / *30,800	*18 300 / *41,600	*18 300 / *41,600	*15 400 / *33,600	11 000 / 23,500	*11 500 / *24,900	6900 / 14,900	8600 / 18,600	4900 / 10,500			7400 / 16,300	4200 / 9200	8.30 / 27.13
-4.5 m / -15.0 ft	kg / lb			*18 200 / *39,500	*18 200 / *39,500	*13 300 / *28,700	11 200 / 24,200	*9900 / *21,200	7100 / 15,300					*7600 / *16,800	5400 / 12,200	7.16 / 23.26
-6.0 m / -20.0 ft	kg / lb					*9000 / *9000	*9000 / *9000							*7100 / *7100	*7100 / *7100	5.37 / 5.37

* Indicates that the load is limited by hydraulic capacity rather than tipping capacity. Lift capacity ratings are based on SAE standard J1097. Rated loads do not exceed 87% of hydraulic lifting capacity or 75% of tipping capacity.

345B L Lift Capacities – Straight Position

4.0 m (13'2") stick (150-4711) with bucket (136-6242)



Load at
Maximum Reach



Load Radius
Over Front



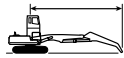
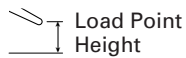
Load Radius
Over Side

Stick Length m / ft	Unit	3.0 m/10.0 ft		4.5 m/15.0 ft		6.0 m/20.0 ft		7.5 m/25.0 ft		9.0 m/30.0 ft		10.5 m/35.0 ft		m ft		
		Over Front	Over Side	Over Front	Over Side	Over Front	Over Side	Over Front	Over Side	Over Front	Over Side	Over Front	Over Side			
10.5 m 35.0 ft	kg lb							*7900 *18,000	*7900 *18,000					*4800 *11,700	*4800 *11,700	8.60 27.67
9.0 m 30.0 ft	kg lb							*8400 *19,900	*8400 *19,900	*7400 *16,400	6900 14,500			*4300 *10,400	*4300 *10,400	9.84 31.95
7.5 m 25.0 ft	kg lb					*8300 *19,700	*8300 *19,700	*8900 *21,000	*8900 *21,000	*7700 *18,400	6900 14,600	*5500 4500		*4000 *9800	*4000 *9400	10.72 34.99
6.0 m 20.0 ft	kg lb			*9400 *21,700	*9400 *21,700	*10 200 *23,700	*10 200 *23,700	*9600 *22,600	*9600 *20,700	*7800 *18,700	6600 14,100	*6500 *15,600	4500 9500	*3900 *9600	3500 7800	11.34 37.10
4.5 m 15.0 ft	kg lb			*17 900 *41,800	*17 900 *41,800	*12 800 *30,200	*12 800 *28,500	*9900 *23,500	8900 19,000	*8000 *19,000	6200 13,200	*6500 *15,600	4300 9100	*4000 *9600	3100 6900	11.73 38.44
3.0 m 10.0 ft	kg lb					*13 300 *31,600	11 600 25,000	*10 100 *24,100	8000 17,200	*8000 *19,200	5700 12,100	*6400 *15,400	4100 8600	*4100 *9900	2900 6300	11.92 39.09
1.5 m 5.0 ft	kg lb					*13 200 *31,400	10 200 22,000	*10 000 *24,000	7200 15,500	*7800 *18,800	5200 11,200	*6100 *14,700	3800 8100	*4300 *10,500	2800 6100	11.91 39.09
0.0 m 0.0 ft	kg lb			*9200 *23,300	*9200 *23,300	*12 200 *29,400	9400 20,200	*9500 *22,700	6600 14,300	*7300 *17,700	4900 10,400	*5600 *13,400	3600 7600	*3800 *9700	2800 6200	11.71 38.43
-1.5 m -5.0 ft	kg lb	*6200 *15,300	*6200 *15,300	*12 700 *31,000	*12 700 *31,000	*10 500 *25,600	9100 19,500	*8300 *20,100	6300 13,600	*6400 *15,500	4600 9900	*4500 *10,800	3500 7500	*3100 *8000	3100 6700	11.31 37.08
-3.0 m -10.0 ft	kg lb			*9100 *22,600	*9100 *22,600	*8100 *19,900	*8100 19,500	*6500 *15,900	6300 13,500	*4800 *11,700	4600 9900	*2500 *5600	*2500	*2100 *5600	*2100 *5600	10.68 34.95
-4.5 m -15.0 ft	kg lb					*4900 *12,200	*4900 *12,200	*3900 *9500	*3900 *9500	*2200	*2200					

* Indicates that the load is limited by hydraulic capacity rather than tipping capacity. Lift capacity ratings are based on SAE standard J1097. Rated loads do not exceed 87% of hydraulic lifting capacity or 75% of tipping capacity.

345B L Lift Capacities – Straight Position

3.4 m (11'2") stick (150-5994) with bucket (136-6242)



Load at
Maximum Reach



Load Radius
Over Front



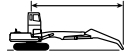
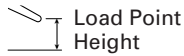
Load Radius
Over Side

Stick Length m / ft	Unit	4.5 m/15.0 ft		6.0 m/20.0 ft		7.5 m/25.0 ft		9.0 m/30.0 ft		10.5 m/35.0 ft		m ft		
		Over Front	Over Side	Over Front	Over Side	Over Front	Over Side	Over Front	Over Side	Over Front	Over Side			
10.5 m 35.0 ft	kg lb			*10 100 *22,200	*10 100 *22,200	*7300 *16,300	*7300 *16,300					*6100 *13,700	*6100 *13,700	7.68 24.58
9.0 m 30.0 ft	kg lb			*9900 *22,100	*9900 *22,100	*8600 *18,800	*8600 *18,800	*5800 12,900	5600 12,300			*5300 *11,900	*5300 *11,900	9.05 29.32
7.5 m 25.0 ft	kg lb			*10 500 *23,200	*10 500 *23,200	*8700 *18,900	*8700 *18,900	*7000 *15,200	5800 12,200			*5000 *11,100	4100 9200	10.00 32.61
6.0 m 20.0 ft	kg lb	*15 200 *31,500	*15 200 *31,500	*11 500 *25,000	*11 500 *25,000	*8900 *19,300	8400 18,100	*7000 *15,300	5500 11,700	*5500 12,100	3400 7500	*4800 *10,800	3200 7200	10.66 34.87
4.5 m 15.0 ft	kg lb			*11 900 *25,900	11 400 24,700	*9000 *19,600	7500 16,200	*7000 *15,300	5100 10,800	*5400 *11,700	3300 6900	*4800 *10,700	2700 6000	11.08 36.30
3.0 m 10.0 ft	kg lb			*11 900 *26,000	9600 20,800	*8900 *19,500	6600 14,200	*6900 *15,000	4500 9700	*5200 *11,300	3000 6400	*4200 *9500	2400 5300	11.28 36.99
1.5 m 5.0 ft	kg lb			*11 200 *24,600	8300 17,900	*8500 *18,600	5800 12,400	*6500 *14,100	4100 8700	*4800 *10,200	2800 5900	*3700 *8200	2300 5000	11.27 36.98
0.0 m 0.0 ft	kg lb			*9800 *21,600	7600 16,400	*7700 *16,700	5300 11,300	*5800 *12,500	3700 8000	*4000 *8300	2700 5600	*3000 *6700	2300 5200	11.06 36.28
-1.5 m -5.0 ft	kg lb	*8100 *18,100	*8100 *18,100	*7800 *17,100	7500 16,000	*6200 *13,600	5100 10,800	*4600 *9800	3600 7700	*2400 *5200	*2400	*2100 *4700	*2100 *4700	10.63 34.85
-3.0 m -10.0 ft	kg lb	*4500 *10,100	*4500 *10,100	*5100 *11,000	*5100 *11,000	*4100 *8800	*4100 *8800	*2600 *5200	*2600 *5200			*900 *1900	*900 *1900	9.95 32.57

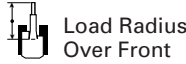
* Indicates that the load is limited by hydraulic capacity rather than tipping capacity. Lift capacity ratings are based on SAE standard J1097. Rated loads do not exceed 87% of hydraulic lifting capacity or 75% of tipping capacity.

345B L Lift Capacities – Bent Position

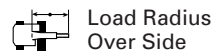
4.0 m (13'2") stick (150-4711) with bucket (136-6242)



Load at Maximum Reach



Load Radius Over Front



Load Radius Over Side

	1.5 m/5.0 ft		3.0 m/10.0 ft		4.5 m/15.0 ft		6.0 m/20.0 ft		7.5 m/25.0 ft		9.0 m/30.0 ft		10.5 m/35.0 ft				m ft		
9.0 m 30.0 ft	kg																*4100 *9300	*4100 *9300	8.53 27.60
7.5 m 25.0 ft	kg											*6200 *12,200	*6200 *12,200				*4000 *8800	*4000 *8800	9.54 31.08
6.0 m 20.0 ft	kg											*6400 *14,000	*6400 *14,000				*4000 *8800	*4000 *8800	10.23 33.45
4.5 m 15.0 ft	kg								*7900 *17,200	*7900 *17,200	*6700 *14,800	6600 14,100	*5200 4500				*4100 *9100	*4100 *9100	10.66 34.93
3.0 m 10.0 ft	kg				*15 600	*15 600	*11 100	*11 100	*8700	*8700	*7200	6200	*6100	4300			*4400	3900	10.87
	lb																		35.65
1.5 m 5.0 ft	kg				*17 600	*17 600	*12 300	11 500	*9400	8000	*7600	5700	*6300	4100			*4800	3700	10.86
	lb				*38,300	*38,200	*26,700	24,600	*20,400	17,100	*16,500	12,100	*13,600	8600			*10,700	8200	35.64
0.0 m 0.0 ft	kg			*8300	*8300	*18 200	16 100	*12 900	10 400	*9800	7300	*7800	5300	*6200	3900		*5500	3700	10.64
	lb			*18,900	*18,900	*39,800	34,700	*28,100	22,300	*21,300	15,600	*16,900	11,300				*12,100	8200	34.92
-1.5 m -5.0 ft	kg	*9000	*9000	*12 700	*12 700	15 500	*12 900	9800	*9800	6900	*7600	5000					*6200	4000	10.20
	lb	*20,200	*20,200	*28,800	*28,800	*38,700	33,300	*28,000	21,000	*21,300	14,700	*16,600	10,700				*13,700	8800	33.42
-3.0 m -10.0 ft	kg	*13 600	*13 600	*18 100	*18 100	*16 300	15 500	*12 100	9600	*9200	6700	*7000	4900				*6200	4500	9.49
	lb	*30,500	*30,500	*40,900	*40,900	*35,500	33,200	*26,300	20,600	*20,400	14,400	*14,900	10,600				*13,800	10,000	31.04
-4.5 m -15.0 ft	kg			*18 700	*18 700	*13 800	*13 800	*10 400	9800	*7800	6800						*6100	5700	8.46
	lb			*40,600	*40,600	*29,900	*29,900	*22,500	21,000	*16,600	14,700						*13,500	12,700	27.55
-6.0 m -20.0 ft	kg					*9700	*9700	*7100	*7100								*5400	*5400	6.95
	lb					*20,500	*20,500	*14,900	*14,900								*11,800	*11,800	22.41

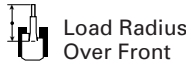
* Indicates that the load is limited by hydraulic capacity rather than tipping capacity. Lift capacity ratings are based on SAE standard J1097. Rated loads do not exceed 87% of hydraulic lifting capacity or 75% of tipping capacity.

345B L Lift Capacities – Bent Position

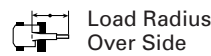
3.4 m (11'2") stick (150-5994) with bucket (136-6242)



Load at Maximum Reach



Load Radius Over Front



Load Radius Over Side

	3.0 m/10.0 ft		4.5 m/15.0 ft		6.0 m/20.0 ft		7.5 m/25.0 ft		9.0 m/30.0 ft				m ft	
9.0 m 30.0 ft	kg						*7300	*7300			*5900	*5900	7.73	
	lb										*11,500	*11,500	24.93	
7.5 m 25.0 ft	kg						*7500	*7500			*5600	*5600	8.83	
	lb						*14,300	*14,300			*10,800	*10,800	28.74	
6.0 m 20.0 ft	kg						*7900	*7900	*6800	*6800	*5600	*5600	9.57	
	lb						*14,900	*14,900	*12,900	*12,500	*10,800	*10,800	31.29	
4.5 m 15.0 ft	kg			*14 800	*14 800	*10 700	*10 700	*8500	*8500	*7000	*7000	*5800	5400	10.04
	lb			*20,300	*20,300	*16,100	*16,100	*16,100	*16,100	*13,400	11,800	*11,100	9000	32.87
3.0 m 10.0 ft	kg			*17 300	*17 300	*11 900	*11 900	*9100	*9100	*7400	6700	*6200	4700	10.25
	lb			*32,600	*32,600	*22,600	*22,600	*17,300	16,000	*14,000	10,800	*11,900	7900	33.63
1.5 m 5.0 ft	kg			*18 600	*18 600	*12 800	*12 800	*9600	8800	*7600	6100	*6300	4400	10.25
	lb			*35,200	*35,200	*24,300	*24,300	*18,300	14,200	*14,400	9800	*12,300	7300	33.63
0.0 m 0.0 ft	kg			*18 500	18 200	*13 100	11 600	*9800	8000	*7600	5600	*6400	4400	10.01
	lb			*35,100	29,400	*24,900	18,600	*18,700	12,800	*14,500	9000	*12,400	7300	32.86
-1.5 m -5.0 ft	kg	*15 400	*15 400	*17 300	*17 300	*12 700	11 000	*9600	7500	*7200	5400	*6400	4800	9.54
	lb	*30,500	*30,500	*32,900	28,800	*24,100	17,700	*18,100	12,100	*13,600	8600	*12,500	8000	31.26
-3.0 m -10.0 ft	kg	*20 000	*20 000	*15 200	*15 200	*11 400	11 000	*8600	7500		*6300	5800	8.78	
	lb	*38,100	*38,100	*28,900	*28,900	*21,700	17,700	*16,100	12,100		*12,300	9600	28.70	
-4.5 m -15.0 ft	kg	*14 800	*14 800	*11 800	*11 800	*9000	*9000	*6200	*6200		*5800	*5800	7.65	
	lb	*27,900	*27,900	*22,300	*22,300	*16,800	*16,800				*11,300	*11,300	24.87	

* Indicates that the load is limited by hydraulic capacity rather than tipping capacity. Lift capacity ratings are based on SAE standard J1097. Rated loads do not exceed 87% of hydraulic lifting capacity or 75% of tipping capacity.

330B L and 345B L Ultra-high Demolition

www.CAT.com

© 1998 Caterpillar
Printed in U.S.A.

AEHQ5333 (12-98)

Materials and specifications subject to change without notice.

