

336E L/LN H

Hydraulic Excavator



Engine

Engine Model	Cat® C9.3 (ATAAC)
Net Power – ISO 14396 (metric)	237 kW (322 hp)
Net Power – ISO 9249 (metric)	230 kW (313 hp)

Drive

Maximum Travel Speed	4.9 km/h
Maximum Drawbar Pull	295 kN

Weights

Minimum Operating Weight	35 400 kg
Maximum Operating Weight	37 000 kg

Introduction

If you are looking for a large machine to do more work with less fuel, look no further than the new 336E L/LN H, the industry's first hydraulic hybrid excavator. This unique machine uses recovered energy from the swing to load your trucks all-day long using up to 33 percent less fuel* than our powerful 336D L/LN machine doing the same amount of work.

More important than being first is being best at delivering the most production with the least amount of fuel to reduce your overall costs and make your business more profitable.

Bottom line is the new 336E L/LN H is designed to put more money in your pocket while making you more competitive, and that's good news for your business.

**90-degree truck loading in 90% compacted material.*

Contents

Hydraulics	4
Engine	6
Operator Station	8
Structures & Undercarriage	9
Work Tools.....	10
Front Linkage	11
Integrated Technologies.....	12
Serviceability.....	13
Safety	14
Complete Customer Care.....	15
Sustainability	16
Specifications.....	17
Standard Equipment.....	27
Optional Equipment.....	28
Notes.....	29





CAT

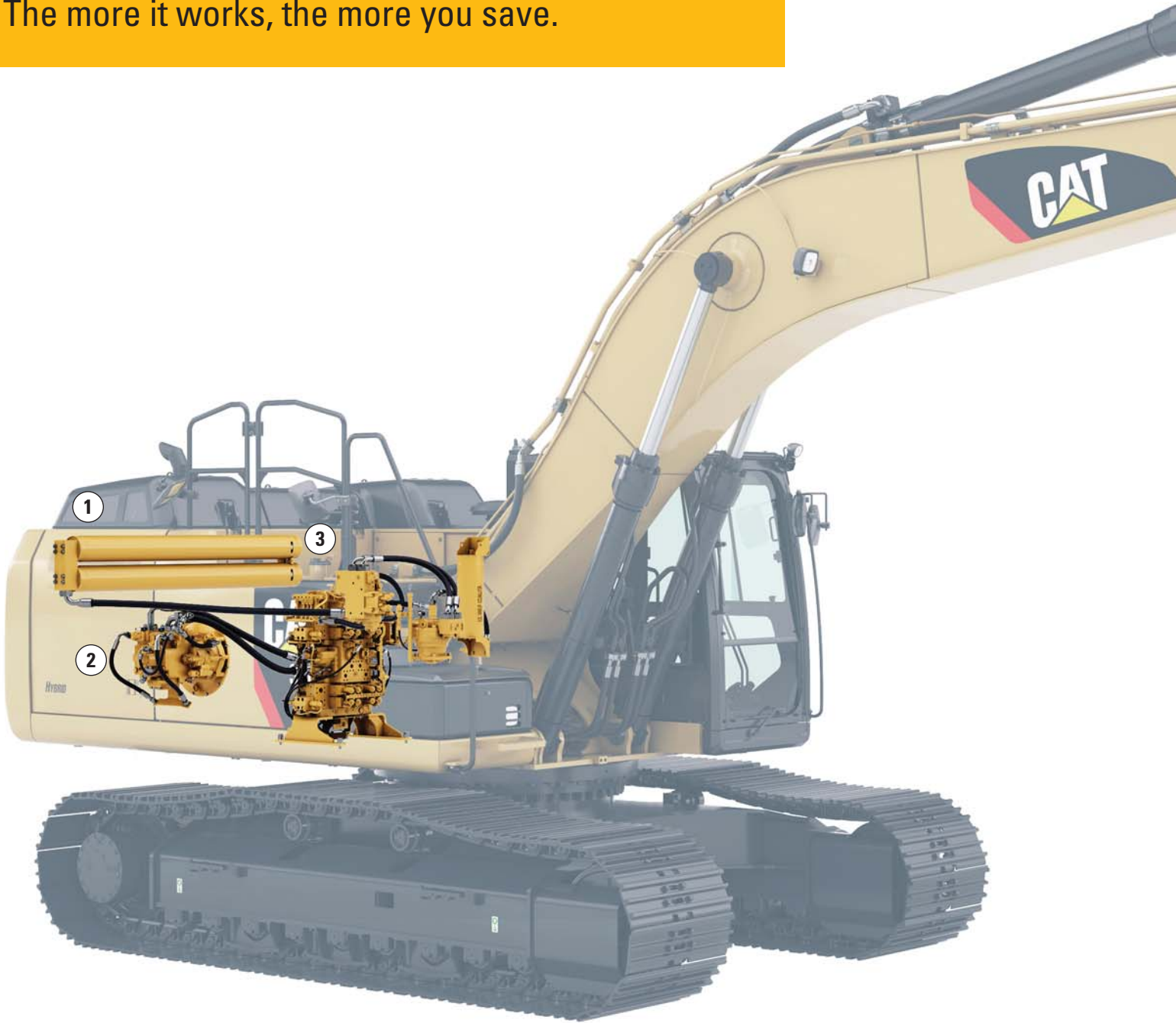
336E

LH

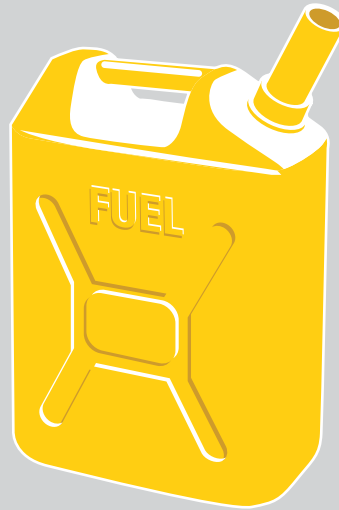
HYBRID

Hydraulics

The more it works, the more you save.



- 1 – Hydraulic Hybrid Swing System
- 2 – Electronic Standardized Programmable (ESP) Pump
- 3 – Adaptive Control System (ACS) Valve



Up to
25%
less fuel consumption
than 336E – the fuel
economy and performance
leader in its class

Up to
33%
less fuel consumption
than 336D

The 336E L/LN H uses three building block technologies to deliver outstanding fuel savings and performance for you:

- The Cat Electronic Standardized Programmable (ESP) pump smoothly transitions between the hydraulic hybrid power sources, engine, and accumulator to conserve fuel.
- The Cat Adaptive Control System (ACS) valve optimizes performance by intelligently managing restrictions and flows to control machine motion, which means your operators will have the power and precision they need and expect.
- The Cat Hydraulic Hybrid Swing System captures the excavator's upper structure swing brake energy in accumulators and then reuses the energy during swing acceleration.

Bottom line is the hydraulic hybrid system is a simple, reliable, and cost-effective solution that will help you significantly reduce your cost per ton.

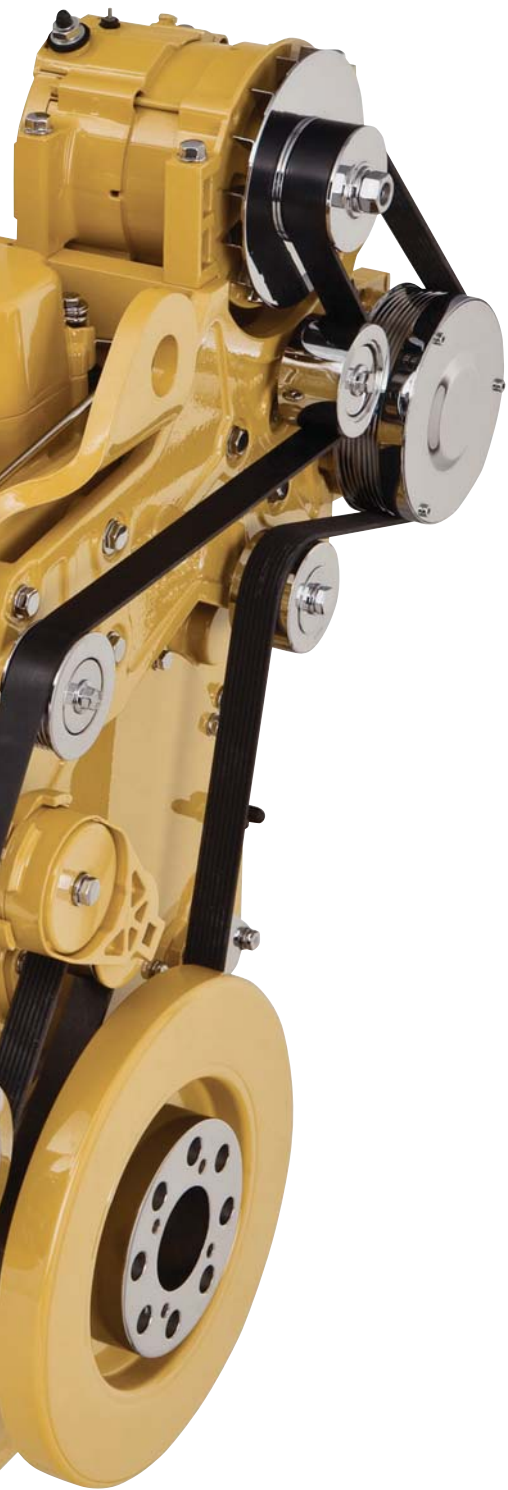
Hydraulic Horsepower, a Cat Advantage

Hydraulic horsepower is the actual machine power available to do work through implements and work tools. It's much more than just the engine power under the hood – it's a core strength that differentiates Cat machines from other brands. In fact, pump and other system components put more power to the ground, which means moving more material in less time and keeping more money in your pocket at the end of the day.

Engine

Reduced emissions, economical and reliable performance you can count on.





The Cat C9.3 ACERT™ Stage IIIB engine is built to meet your demanding needs all day long. There is no interruption to your job process because the Cat regeneration system works automatically with no operator intervention required. If your operators are working in heat-restricted areas, they can use a manual override button to move the machine before the regeneration process begins.

Power Modes

The 336E L/LN H features three power modes to help manage fuel consumption: High power, standard power, and economy. Two additional fuel-saving features are on-demand engine power and engine idle shutdown. The Automatic Engine Speed Control (AEC) automatically reduces engine speed when the machine is inactive. The AEC system is designed to reduce fuel consumption and noise. Lower engine speeds can also increase engine life. Engine idle shutdown automatically shuts the engine off when idling for more than a specified amount of time that you set, which can save significant amounts of fuel, reduce your emissions and even reduce your accumulated service hours, which will extend service intervals and improve re-sale value.

Biodiesel-Ready Fuel System

The 336E H runs on ultra-low-sulfur diesel fuel, but you have added flexibility with the C9.3 ACERT engine because it's equipped to run on biodiesel fuel up to B20. Just fill it up and go.



Seats

Not only is the cab as quiet as today's top pickup trucks, but several seat options help give your operators all the comfort they need for a long day of work. Air suspension and heated seats are available, and all include a reclining back, upper and lower seat slide adjustments, and height and tilt angle adjustments.

Operator Station

Your operators will enjoy the incredibly quiet and comfortable cab.

Controls

Your operators can adjust the right and left joysticks for individual preferences, helping the operator become more comfortable, more productive, and more alert. A heavy lift mode increases machine system pressure to improve lift – a nice benefit for your operators in certain situations. It also reduces engine speed and pump flow to improve controllability.

Monitor

Your operators can focus on the job at hand with a high-resolution LCD monitor that is programmable in 42 languages to support today's diverse workforce. It also projects the image from the rearview camera, further increasing job site safety and productivity.

Power Supply

The operator station includes two 12-volt power supply sockets located near the key storage areas for charging electronic devices such as MP3 players and cell phones.

Storage

Your operators can store their gear in storage spaces located in the front, rear, and side consoles. A dedicated space near the auxiliary power supply will hold an MP3 player and cell phone. The drink holder accommodates large mugs with handles, and a shelf behind the seat stores large lunch or toolboxes.

Automatic Climate Control

An automatic climate control system features five air outlets with filtered ventilation to make your operators comfortable in either hot or cold climates.



Structures & Undercarriage

You can take on a variety of tough tasks with this built-to-last machine.



Frame

You can expect excellent quality, reliability, and durability with the 336E L/LN H's reinforced lower and upper frames. Both are built to handle a hard day's work over and over again.

Undercarriage

The 336E H is offered with a Long undercarriage (336E L H) or Long Narrow undercarriage (336E LN H). Heavy-duty track rollers, precision forged carrier rollers, press-fit pin master joints, and enhanced track shoe bolts enhance machine durability and reduce the risk of downtime and your need to replace components. A full-length track guiding guard helps maintain track alignment and protects undercarriage components in rocky applications.

Counterweight

Whether you are truck loading or trenching, a 4.9 mt* counterweight gives you plenty of weight and balance for the high-production work this machine is designed to take on. With integrated links, the counterweight can easily be removed for maintenance or shipping.

**Two accumulators and a bracket provide additional weight.*

Work Tools

You can dig, hammer, rip, and cut with confidence.



You can extend the versatility and performance of your machine with the full lineup of Cat work tools. Each tool equips your machine to perform many different tasks found at a variety of job sites.

Couplers: Quick Tool Changes

Imagine the productivity you'll achieve with a quick coupler. Combine a robust coupler with a common work tool inventory that can be shared between same size machines, and you'll get performance and flexibility on every job.

Work Tools: Cut, Crush, Pulverize, and Load

No matter your specialty, Caterpillar provides tools that are perfectly matched to get the most out of your Cat machine – quickly and efficiently.

Buckets: Dig, Move, Load

Cat buckets are designed to fill efficiently so you notice a fast, smooth cycle which means high productivity each time you dig. Wear characteristics of General Duty, Heavy Duty and Severe Duty buckets give you solid performance in a wide variety of material abrasions. Ditch cleaning and other specialty buckets are available when needed.



Front Linkage

You'll experience a long service life even in the harshest of conditions.

Your uptime and service intervals are increased with high-quality, durable, and reliable booms, sticks, and linkage pins. Each boom and stick is built with internal baffle plates for additional durability, and each undergoes ultrasound inspection to ensure quality and reliability for the tough work you do.

The 336E L/LN H is offered with a 6.5 m heavy-duty reach boom and a 3.2 m or 2.8 m heavy-duty stick.

The heavy-duty reach boom covers all the applications this size of machine was designed to take on such as digging dirt, moving rock, placing pipe, and the endless amount of tasks that can be done with Cat hydraulic work tools.

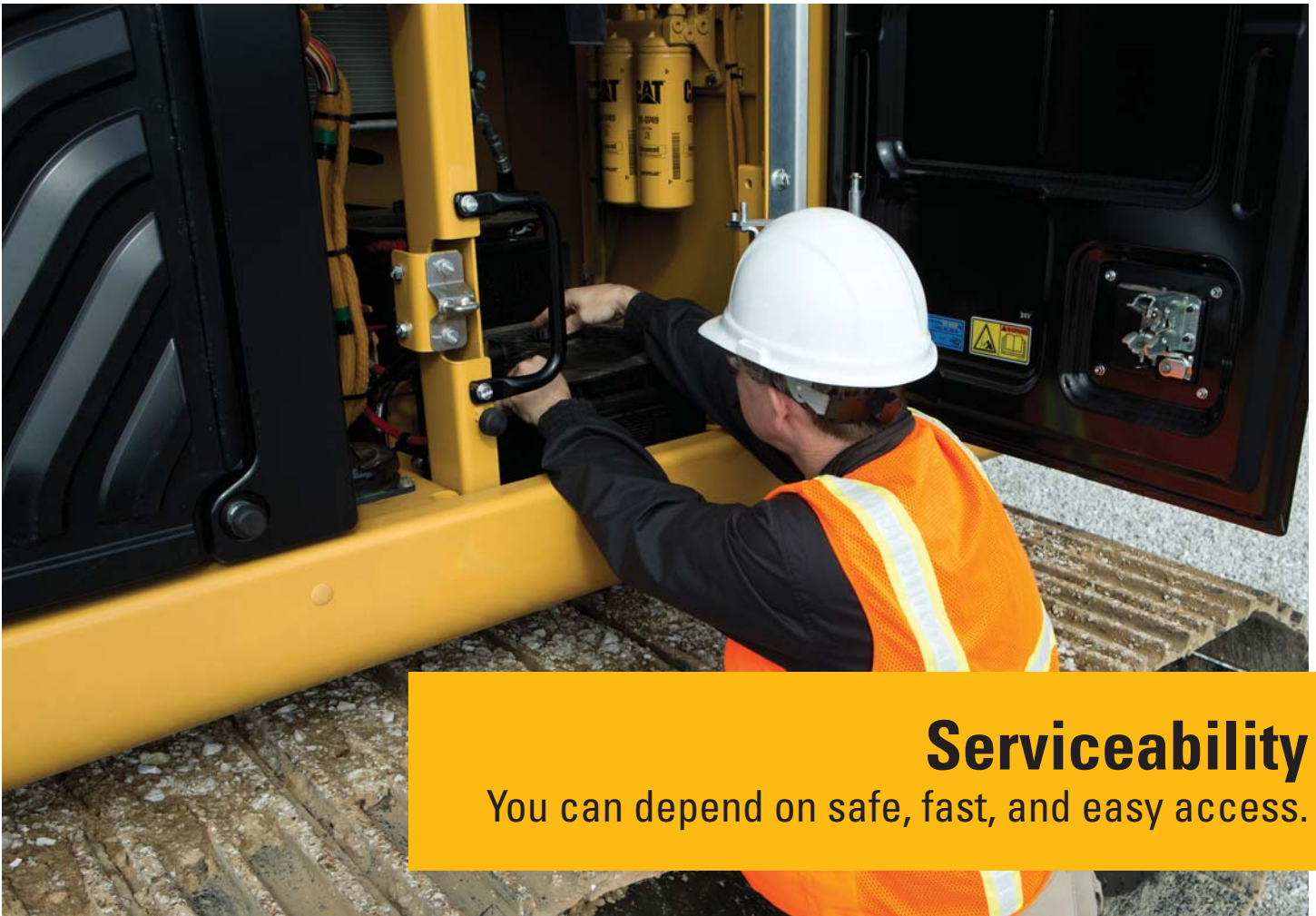
Integrated Technologies

Make your team's work easier and more efficient.



Cat Product Link™

You can monitor and improve your fleet management with Cat Product Link. The integrated system reports events, diagnostic codes, hours, fuel consumption, location, and other pieces of detailed machine information to the secured web-based application called Vision Link™. The powerful tools within Vision Link communicate with you and your authorized Cat dealer to help avoid downtime and better maintain your fleet.



Serviceability

You can depend on safe, fast, and easy access.



Ground-Level Compartments

Your service technicians have ground-level access to the radiator, pump, and air cleaner compartments through wide service doors, making it easy for them to reach, check, and replace fluids and filters.

Other Service Benefits

The water separator with water level sensor has a primary fuel filter element located in the pump compartment near ground level; the electric priming pump is mounted on the primary filter base and is easier to service than traditional hand-priming pumps.

The engine oil dipstick is conveniently located in the front of the engine compartment.

The fuel tank's remote drain cock makes it easy and simple to remove water and sediment during routine maintenance.

Overfilling the fuel tank is significantly reduced with an integrated fuel level indicator.



Safety

Several built-in features will help protect your people.

Roll-Over Protective Structure (ROPS) Cab

In the event of a roll-over, your operators will benefit from the enhanced protection of a ROPS-certified cab.

Anti-Skid Plates

Slipping hazards are reduced with anti-skid plates on the surface of the upper structure and the top of the storage box area.

Steps, Hand and Guard Rails

Your service technicians can work securely on the machine with extended hand and guard rails to the upper deck and steps on the track frame and storage box.

Lights

Halogen lights provide plenty of illumination. They can be programmed to stay on for up to 90 seconds after the engine has been turned off to help your operators safely exit the machine.

Visibility – Windows

The 70/30 split configuration features an upper window equipped with handles on the top and both sides so the operator can slide it to store in the ceiling. The lower window is removable and can be stored on the left wall of the cab shell.

A one-piece fixed front windshield provides operators an unobstructed forward view, and the large skylight provides great overhead visibility.

Wiper System

The parallel wiper system covers most of the front window without leaving unwiped areas in the line of sight of the operator.

Rearview Camera

Your operator has a clear view behind the machine through the monitor with the rearview camera. It is housed in the counterweight for increased protection.





Complete Customer Care

Your Cat dealer will support you like no other.

Product Support

You can maximize your machines' uptime with the Cat worldwide dealer network. You can also decrease your repair costs by utilizing Cat remanufactured components while contributing to sustainable development.

Machine Selection

What are your job requirements and machine attachments? What production do you need? Your Cat dealer can provide recommendations to help you make the right machine configuration.

Purchase

You can ensure lower owning and operating costs by utilizing unique Cat dealer services and financing options.

Customer Support Agreements

Cat dealers offer a variety of customer support agreements and work with you to develop a plan to meet your specific needs. These plans can cover the entire machine, including attachments, to help protect your investment.

Operation

You can boost your profits by improving your operators' techniques. Your Cat dealer has videos, literature, and other ideas to help increase productivity. Caterpillar also offers simulators and certified operator training to help maximize the return on your investment.

Replacement

Repair, rebuild, or replace? Your Cat dealer can help evaluate the cost involved so you can make the best choice for your business.

- The 336E L/LN H moves as much material as a standard 336E L/LN yet burns up to 25% less fuel in truck loading applications. This means more efficiency and productivity for you with less resource consumption and fewer CO₂ emissions.
- In terms of CO₂ reduction, a 25% fuel advantage is equivalent to removing 12 passenger cars off the road annually.
Source: EPA website.
- The 336E L/LN H has the flexibility of running on either ultra-low-sulfur diesel (ULSD) fuel with 15 ppm of sulfur or less or biodiesel fuel up to B20 blended with ULSD.
- An overfill indicator rises when the tank is full to help your service technicians avoid spilling.
- You can ensure fast, easy, and secure changing of engine and hydraulic oil with the Cat QuickEvac™ system.
- A unique engine oil filter eliminates the need for painted metal cans and aluminum top plates. The cartridge-style spin-on housing enables the internal filter to be separated and replaced; the used internal element can be incinerated to help reduce waste.

Sustainability

Your machine is designed to benefit generations ahead.



336E L/LN H Hydraulic Excavator Specifications

Engine

Engine Model	Cat C9.3 (ATAAC)
Net Power – ISO 9249	230 kW
Net Power – ISO 9249	313 hp (metric)
Net Power – ISO 9249	308 hp (imperial)
Power – ISO 14396	237 kW
Power – ISO 14396	322 hp (metric)
Power – ISO 14396	318 hp (imperial)
Bore	115 mm
Stroke	149 mm
Displacement	9.3 L

Hydraulic System

Main System – Maximum Flow (Total)	570 L/min
Swing System – Maximum Flow	276 L/min
Maximum Pressure – Equipment	35 000 kPa
Maximum Pressure – Equipment (Heavy Lift)	37 000 kPa
Maximum Pressure – Travel	35 000 kPa
Maximum Pressure – Swing	31 500 kPa
Pilot System – Maximum Flow	28 L/min
Pilot System – Maximum Pressure	4100 kPa
Boom Cylinder – Bore	150 mm
Boom Cylinder – Stroke	1440 mm
Stick Cylinder – Bore	170 mm
Stick Cylinder – Stroke	1738 mm
DB Bucket Cylinder – Bore	150 mm
DB Bucket Cylinder – Stroke	1151 mm

Drive

Maximum Travel Speed	4.9 km/h
Maximum Drawbar Pull	295 kN
Gradeability	35°/70%

Swing Mechanism

Swing Speed	9.0 rpm
Swing Torque	109 kN·m

Service Refill Capacities

Fuel Tank Capacity	620 L
Cooling System	56 L
Engine Oil (with filter)	30.5 L
Swing Drive (each)	19 L
Final Drive (each)	8 L
Hydraulic System (including tank)	380 L
Hydraulic Tank	175 L

Sound Performance

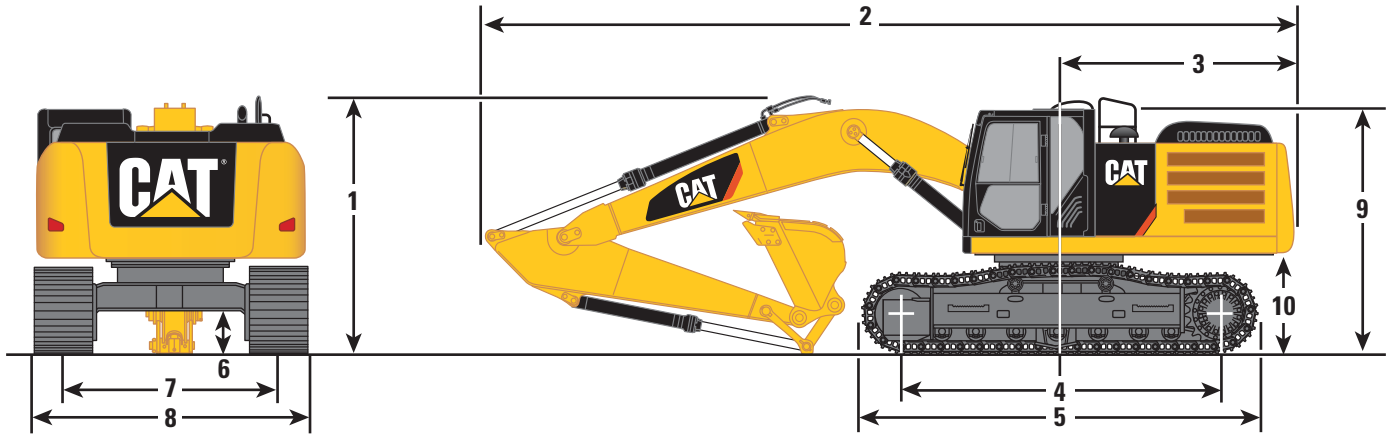
Operator Sound (ISO 6396)	72 dB(A)
Spectator Sound (ISO 6395)	105 dB(A)

- When properly installed and maintained, the cab offered by Caterpillar, when tested with doors and windows closed according to ISO 6396, meets requirements for operator sound exposure limits in effect at time of manufacture.
- Hearing protection may be needed when operating with an open operator station and cab (when not properly maintained or doors/windows open) for extended periods or in noisy environment.

336E L/LN H Hydraulic Excavator Specifications

Dimensions

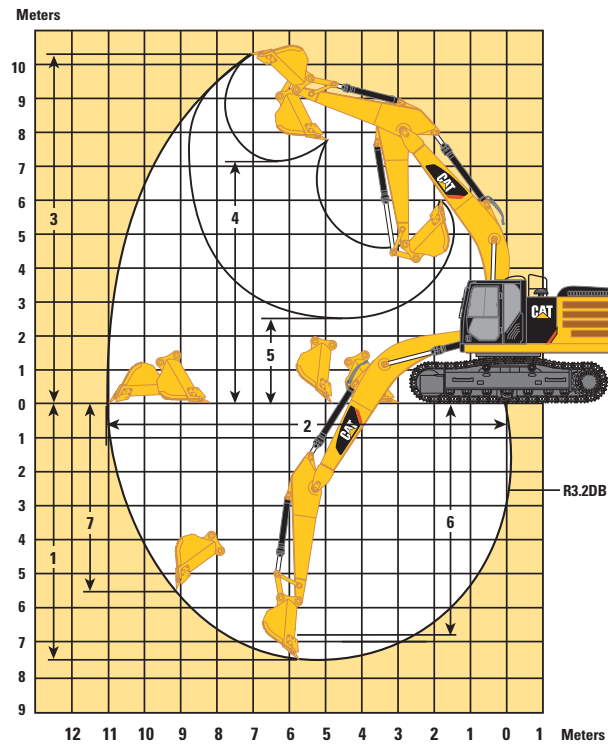
All dimensions are approximate.



Stick	HD Reach Boom 6.50 m	
	R3.2DB	R2.8DB
1 Shipping Height including Shoe Lug Height	3510 mm	3650 mm
Shipping Height with Top Guard	3510 mm	3510 mm
2 Shipping Length	11 160 mm	11 190 mm
3 Tail Swing Radius	3490 mm	3490 mm
4 Length to Center of Rollers		
Long Undercarriage	4040 mm	4040 mm
Long Narrow Undercarriage	4040 mm	4040 mm
5 Track Length		
Long Undercarriage	5020 mm	5020 mm
Long Narrow Undercarriage	5020 mm	5020 mm
6 Ground Clearance including Shoe Lug Height	510 mm	510 mm
Ground Clearance without Shoe Lug Height	480 mm	480 mm
7 Track Gauge		
Long Undercarriage	2590 mm	2590 mm
Long Narrow Undercarriage	2390 mm	2390 mm
8 Transport Width		
Long Undercarriage (600 mm shoes)	3190 mm	3190 mm
Long Undercarriage (700 mm shoes)	3290 mm	3290 mm
Long Undercarriage (800 mm shoes)	3390 mm	3390 mm
Long Undercarriage (850 mm shoes)	3440 mm	3440 mm
Long Narrow Undercarriage (600 mm shoes)	2990 mm	2990 mm
Long Narrow Undercarriage (700 mm shoes)	3090 mm	3090 mm
9 Cab Height	3150 mm	3150 mm
Cab Height with Top Guard	3360 mm	3360 mm
10 Counterweight Clearance without Shoe Lug Height	1220 mm	1220 mm
Bucket Capacity	2.28 m ³	2.28 m ³
Bucket Tip Radius	1760 mm	1760 mm

Working Ranges

All dimensions are approximate.



Stick	HD Reach Boom 6.50 m	
	R3.2DB	R2.8DB
1 Maximum Digging Depth	7490 mm	7090 mm
2 Maximum Reach at Ground Level	11 020 mm	10 710 mm
3 Maximum Cutting Height	10 320 mm	10 370 mm
4 Maximum Loading Height	7110 mm	7110 mm
5 Minimum Loading Height	2610 mm	3010 mm
6 Maximum Depth Cut for 2440 mm Level Bottom	6820 mm	6390 mm
7 Maximum Vertical Wall Digging Depth	5500 mm	5470 mm
Bucket Capacity	2.28 m ³	2.28 m ³
Bucket Tip Radius	1760 mm	1760 mm

336E L/LN H Hydraulic Excavator Specifications

Major Component Weights*

Lower Structure (without counterweight and track)	
Long Undercarriage	8700 kg
Long Narrow Undercarriage	8600 kg
Upper Structure (without front linkage)	10 000 kg
Counterweight 4.9 mt	4900 kg
Boom (includes lines, pins and stick cylinder)	
HD Reach Boom – 6.50 m	4100 kg
Stick (includes lines, pins and bucket cylinder)	
R3.2DB HD	1800 kg
R2.8DB HD	1700 kg
Track Shoe	
600 mm Triple Grouser	4100 kg
600 mm HD Triple Grouser	4700 kg
600 mm Double Grouser	4900 kg
700 mm Triple Grouser	4400 kg
800 mm Triple Grouser	5100 kg
850 mm Triple Grouser	5400 kg
Bucket	
2.28 m ³	1500 kg

*Base machine includes 75 kg operator weight, 90% fuel weight and undercarriage.

Operating Weight and Ground Pressure

Long Undercarriage						
HD Reach Boom (6.50 m)	850 TG		800 TG		700 TG	
R3.2DB	37 000 kg	48.7 kPa	36 700 kg	51.3 kPa	36 000 kg	57.5 kPa
R2.8DB	36 900 kg	48.5 kPa	36 600 kg	51.1 kPa	35 900 kg	57.3 kPa
HD Reach Boom (6.50 m)	600 TG		600 TG HD		600 DG	
R3.2DB	35 700 kg	66.5 kPa	36 300 kg	67.6 kPa	36 800 kg	68.6 kPa
R2.8DB	35 600 kg	66.3 kPa	36 200 kg	67.5 kPa	36 700 kg	68.4 kPa
Long Narrow Undercarriage						
HD Reach Boom (6.50 m)	600 TG HD		600 TG		600 DG	
R3.2DB	36 200 kg	67.5 kPa	35 500 kg	66.1 kPa	36 700 kg	68.4 kPa
R2.8DB	36 100 kg	67.3 kPa	35 400 kg	66.0 kPa	36 600 kg	68.2 kPa
HD Reach Boom (6.50 m)	700 TG					
R3.2DB	35 900 kg	57.3 kPa				
R2.8DB	35 800 kg	57.2 kPa				

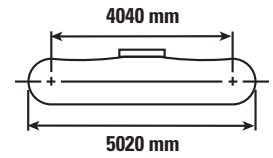
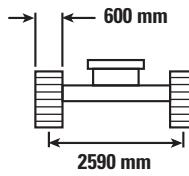
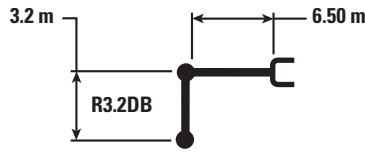
Bucket and Stick Forces

Stick	HD Reach Boom 6.50 m	
	R3.2DB	R2.8DB
General Duty		
Bucket Digging Force (ISO)	211.8 kN	211.8 kN
Stick Digging Force (ISO)	166.7 kN	185.5 kN
General Duty Capacity		
Bucket Digging Force (ISO)	209.7 kN	209.7 kN
Stick Digging Force (ISO)	165.9 kN	184.6 kN
Heavy Duty		
Bucket Digging Force (ISO)	209.9 kN	209.9 kN
Stick Digging Force (ISO)	166.1 kN	184.8 kN
Heavy Duty – Power		
Bucket Digging Force (ISO)	234.2 kN	234.2 kN
Stick Digging Force (ISO)	169.0 kN	188.3 kN
Severe Duty		
Bucket Digging Force (ISO)	209.9 kN	209.9 kN
Stick Digging Force (ISO)	166.1 kN	184.8 kN
Extreme Duty		
Bucket Digging Force (ISO)	209.9 kN	209.9 kN
Stick Digging Force (ISO)	166.1 kN	184.8 kN

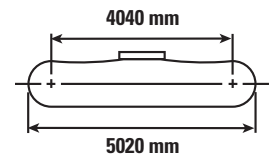
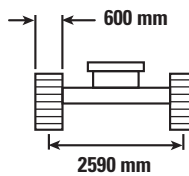
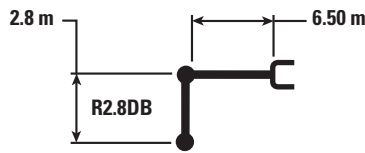
Caterpillar recommends using appropriate work tools to maximize the value customers receive from our products. Use of work tools, including buckets, which are outside of Caterpillar's recommendations or specifications for weight, dimensions, flows, pressures, etc. may result in less-than-optimal performance, including but not limited to reductions in production, stability, reliability, and component durability. Improper use of a work tool resulting in sweeping, prying, twisting and/or catching of heavy loads will reduce the life of the boom and stick.

336E L/LN H Hydraulic Excavator Specifications

336E L H with HD Reach Boom Lift Capacities – Counterweight: 4.9 mt – Heavy Lift: On



Reach (m)	Unit	1.5 m		3.0 m		4.5 m		6.0 m		7.5 m		9.0 m		m		
		Diagram 1	Diagram 2	Diagram 1	Diagram 2	Diagram 1	Diagram 2	Diagram 1	Diagram 2	Diagram 1	Diagram 2	Diagram 1	Diagram 2	Diagram 1	Diagram 2	
7.5 m	kg									*8500	7200			*7200	6850	7.70
6.0 m	kg									*8600	7100			*7000	5650	8.58
4.5 m	kg					*13 050	*13 050	*10 500	9700	*9200	6900	8000	5100	*7050	5000	9.13
3.0 m	kg					*16 500	13 750	*12 150	9100	*10 050	6600	7850	5000	*7300	4650	9.41
1.5 m	kg					*19 000	12 800	*13 600	8600	10 100	6300	7700	4850	7200	4500	9.44
0.0 m	kg					*19 850	12 400	13 800	8250	9900	6100	7600	4750	7350	4600	9.22
-1.5 m	kg			*14 100	*14 100	*19 450	12 300	13 650	8100	9750	6000			7900	4900	8.75
-3.0 m	kg			*22 200	*22 200	*18 050	12 450	13 700	8150	9800	6050			9050	5600	7.96
-4.5 m	kg			*20 250	*20 250	*15 300	12 750	*11 600	8400					*9800	7200	6.75



Reach (m)	Unit	1.5 m		3.0 m		4.5 m		6.0 m		7.5 m		9.0 m		m		
		Diagram 1	Diagram 2	Diagram 1	Diagram 2	Diagram 1	Diagram 2	Diagram 1	Diagram 2	Diagram 1	Diagram 2	Diagram 1	Diagram 2	Diagram 1	Diagram 2	
7.5 m	kg													*9100	7550	7.34
6.0 m	kg							*9800	*9800	*9100	7250			*8750	6150	8.25
4.5 m	kg					*14 100	*14 100	*11 100	9850	*9650	7050			8500	5400	8.82
3.0 m	kg					*17 500	13 900	*12 700	9300	*10 450	6750	8100	5150	7950	5050	9.11
1.5 m	kg					*16 900	13 100	*14 000	8800	10 400	6500	7950	5050	7800	4900	9.14
0.0 m	kg					*19 900	12 850	14 250	8550	10 250	6350			8000	5000	8.92
-1.5 m	kg			*13 200	*13 200	*19 150	12 800	14 150	8450	10 150	6250			8650	5400	8.42
-3.0 m	kg			*22 900	*22 900	*17 450	13 000	*13 450	8550	*10 200	6350			*9950	6250	7.60
-4.5 m	kg			*18 300	*18 300	*14 250	13 350	*10 600	8850					*9700	8250	6.33



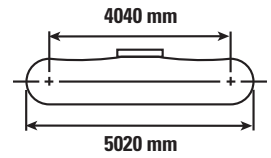
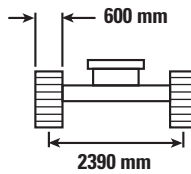
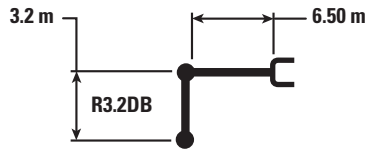
ISO 10567



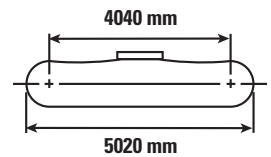
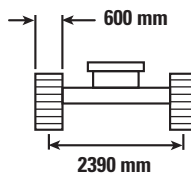
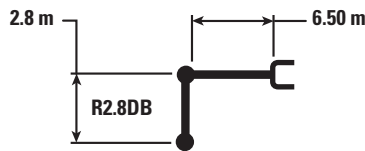
*Indicates that the load is limited by hydraulic lifting capacity rather than tipping load. The above loads are in compliance with hydraulic excavator lift capacity standard ISO 10567:2007. They do not exceed 87% of hydraulic lifting capacity or 75% of tipping load. Weight of all lifting accessories must be deducted from the above lifting capacities. Lifting capacities are based on the machine standing on a firm, uniform supporting surface. The use of a work tool attachment point to handle/lift objects, could affect the machine lift performance.

Always refer to the appropriate Operation and Maintenance Manual for specific product information.

336E LN H with HD Reach Boom Lift Capacities – Counterweight: 4.9 mt – Heavy Lift: On



		1.5 m		3.0 m		4.5 m		6.0 m		7.5 m		9.0 m		m		
7.5 m	kg									*8500	6650			*7200	6300	7.70
6.0 m	kg									*8600	6550			*7000	5200	8.58
4.5 m	kg					*13 050	*13 050	*10 500	8900	*9200	6350	7950	4700	*7050	4600	9.13
3.0 m	kg					*16 500	12 500	*12 150	8350	*10 050	6050	7850	4550	7300	4250	9.41
1.5 m	kg					*19 000	11 600	*13 600	7850	10 100	5750	7700	4450	7150	4150	9.44
0.0 m	kg					*19 850	11 200	13 750	7500	9850	5550	7550	4350	7300	4200	9.22
-1.5 m	kg			*14 100	*14 100	*19 450	11 100	13 600	7400	9750	5450			7850	4500	8.75
-3.0 m	kg			*22 200	22 100	*18 050	11 200	13 650	7400	9800	5500			9050	5150	7.96
-4.5 m	kg			*20 250	*20 250	*15 300	11 550	*11 600	7650					*9800	6550	6.75



		1.5 m		3.0 m		4.5 m		6.0 m		7.5 m		9.0 m		m		
7.5 m	kg													*9100	6800	7.34
6.0 m	kg							*9800	9300	*9100	6500			*8750	5500	8.25
4.5 m	kg					*14 100	13 550	*11 100	8850	*9650	6300			8200	4850	8.82
3.0 m	kg					*17 500	12 300	*12 700	8300	10 350	6050	7850	4600	7700	4500	9.11
1.5 m	kg					*16 900	11 500	*14 000	7800	10 100	5800	7700	4450	7550	4350	9.14
0.0 m	kg					*19 900	11 250	13 800	7550	9900	5600			7750	4450	8.92
-1.5 m	kg			*13 200	*13 200	*19 150	11 200	13 700	7450	9800	5550			8350	4800	8.42
-3.0 m	kg			*22 900	22 450	*17 450	11 400	*13 450	7550	9950	5650			9750	5550	7.60
-4.5 m	kg			*18 300	*18 300	*14 250	11 750	*10 600	7850					*9700	7350	6.33



ISO 10567



*Indicates that the load is limited by hydraulic lifting capacity rather than tipping load. The above loads are in compliance with hydraulic excavator lift capacity standard ISO 10567:2007. They do not exceed 87% of hydraulic lifting capacity or 75% of tipping load. Weight of all lifting accessories must be deducted from the above lifting capacities. Lifting capacities are based on the machine standing on a firm, uniform supporting surface. The use of a work tool attachment point to handle/lift objects, could affect the machine lift performance.

Always refer to the appropriate Operation and Maintenance Manual for specific product information.

336E L/LN H Hydraulic Excavator Specifications

Work Tool Offering Guide*

Boom Option	336E L		336E LN	
	HD Reach Boom		HD Reach Boom	
Stick Option	R3.2DB	R2.8DB	R3.2DB	R2.8DB
Hammer	H140Ds H160Ds	H140Ds H160Ds	H140Ds H160Ds** ##	H140Ds H160Ds
Multi-Processor	MP20	MP20	MP20 with all jaw options	MP20 with all jaw options
Mobile Scrap and Demolition Shear	S325B S365C###	S325B S340B*** # S365C###	S325B S365C###	S325B
Pulverizer	P225 P235** ##	P225 P235**	P225 P235*** #	P225 P235***
Crusher	P325 P335** ##	P325 P335**	P325 P335*** #	P325 P335***
Rotating Grapple	G325B G330B** ##	G325B G330B**	G325B G330B***	G325B G330B***
Compactor (Vibratory Plate)	CVP110	CVP110	CVP110	CVP110
Orange Peel Grapple				
Clamshells				
Thumbs				
Rippers				
Rakes				
Center-Lock Pin Grabber Coupler				
Dedicated Quick Coupler				

These work tools are available for the 336E L/LN.
Consult your Cat dealer for proper match.

*Matches are dependent on excavator configurations. Consult your Cat dealer for proper work tool match.

**Pin-on or CW coupler.

***Pin-on only.

#Over the front only.

##Over the front only with CW coupler.

###Boom Mount.

336E L H Bucket Specifications and Compatibility

	Linkage	Width	Capacity	Weight	Fill	HD Reach Boom	
		mm	m ³	kg	%	R3.2DB	R2.8DB
Without Quick Coupler							
General Duty (GD)	DB	1350	1.64	1173	100%	●	●
	DB	1650	2.11	1352	100%	⊖	⊙
	DB	1800	2.35	1453	100%	X	⊖
	TB	1500	2.14	1872	100%		
	TB	1650	2.41	2027	100%		
Heavy Duty (HD)	DB	1350	1.64	1481	100%	●	●
	DB	1500	1.88	1600	100%	⊙	⊙
	DB	1650	2.12	1730	100%	⊖	⊖
	TB	1650	2.41	2210	100%		
Severe Duty (SD)	DB	1650	2.15	1827	90%	⊖	⊙
	TB	1350	1.87	2065	90%		
	TB	1650	2.41	2385	90%		
Maximum load pin-on (payload + bucket)					kg	4830	5140
With Quick Coupler, CW45/CW45s							
General Duty (GD)	DB	1050	1.17	986	100%	●	●
	DB	1200	1.40	1064	100%	●	●
	DB	1350	1.64	1143	100%	⊙	●
	DB	1500	1.87	1245	100%	⊖	⊙
	DB	1650	2.11	1324	100%	⊖	⊖
Heavy Duty (HD)	DB	1350	1.64	1417	100%	⊙	⊙
	DB	1500	1.88	1514	100%	⊖	⊖
	DB	1650	2.12	1647	100%	○	○
	TB	1650	2.41	2117	100%		
Severe Duty (SD)	DB	1050	1.17	1272	90%	●	●
	DB	1650	2.15	1802	90%	○	⊖
	TB	1350	1.87	1974	90%		
	TB	1650	2.41	2295	90%		
Maximum load with coupler (payload + bucket)					kg	4340	4650

The above loads are in compliance with hydraulic excavator standard EN474, they do not exceed 87% of hydraulic lifting capacity or 75% of tipping capacity with front linkage fully extended at ground line with bucket curled.

Capacity based on ISO 7451.

Bucket weight with General Duty tips.

Maximum Material Density:

- 2100 kg/m³
- ⊙ 1800 kg/m³
- ⊖ 1500 kg/m³
- 1200 kg/m³
- X Not Recommended

Caterpillar recommends using appropriate work tools to maximize the value customers receive from our products. Use of work tools, including buckets, which are outside of Caterpillar's recommendations or specifications for weight, dimensions, flows, pressures, etc. may result in less-than-optimal performance, including but not limited to reductions in production, stability, reliability, and component durability. Improper use of a work tool resulting in sweeping, prying, twisting and/or catching of heavy loads will reduce the life of the boom and stick.

336E L/LN H Hydraulic Excavator Specifications

336E LN H Bucket Specifications and Compatibility

	Linkage	Width	Capacity	Weight	Fill	HD Reach Boom	
		mm	m ³	kg	%	R3.2DB	R2.8DB
Without Quick Coupler							
General Duty (GD)	DB	1350	1.64	1173	100%	⊙	●
	DB	1650	2.11	1352	100%	⊖	⊖
	DB	1800	2.35	1453	100%	○	○
	TB	1500	2.14	1872	100%		
	TB	1650	2.41	2027	100%		
Heavy Duty (HD)	DB	1350	1.64	1481	100%	⊙	⊙
	DB	1500	1.88	1600	100%	⊖	⊖
	DB	1650	2.12	1730	100%	○	○
	TB	1650	2.41	2210	100%		
Severe Duty (SD)	DB	1650	2.15	1827	90%	○	⊖
	TB	1350	1.87	2065	90%		
	TB	1650	2.41	2385	90%		
Maximum load pin-on (payload + bucket)					kg	4370	4630
With Quick Coupler, CW45/CW45s							
General Duty (GD)	DB	1050	1.17	986	100%	●	●
	DB	1200	1.40	1064	100%	●	●
	DB	1350	1.64	1143	100%	⊖	⊙
	DB	1500	1.87	1245	100%	○	⊖
	DB	1650	2.11	1324	100%	○	○
Heavy Duty (HD)	DB	1350	1.64	1417	100%	⊖	⊖
	DB	1500	1.88	1514	100%	○	○
	DB	1650	2.12	1647	100%	◇	○
	TB	1650	2.41	2117	100%		
Severe Duty (SD)	DB	1050	1.17	1272	90%	●	●
	DB	1650	2.15	1802	90%	◇	○
	TB	1350	1.87	1974	90%		
	TB	1650	2.41	2295	90%		
Maximum load with coupler (payload + bucket)					kg	3880	4140

The above loads are in compliance with hydraulic excavator standard EN474, they do not exceed 87% of hydraulic lifting capacity or 75% of tipping capacity with front linkage fully extended at ground line with bucket curled.

Capacity based on ISO 7451.

Bucket weight with General Duty tips.

Maximum Material Density:

- 2100 kg/m³
- ⊙ 1800 kg/m³
- ⊖ 1500 kg/m³
- 1200 kg/m³
- ◇ 900 kg/m³

Caterpillar recommends using appropriate work tools to maximize the value customers receive from our products. Use of work tools, including buckets, which are outside of Caterpillar's recommendations or specifications for weight, dimensions, flows, pressures, etc. may result in less-than-optimal performance, including but not limited to reductions in production, stability, reliability, and component durability. Improper use of a work tool resulting in sweeping, prying, twisting and/or catching of heavy loads will reduce the life of the boom and stick.

Standard Equipment

Standard equipment may vary. Consult your Cat dealer for details.

CAB

- ROPS cab
- Pressurized operator station with positive filtration
- Mirror package
- Sliding upper door window (left-hand cab door)
- Glass-breaking safety hammer
- Coat hook
- Beverage holder
- Literature holder
- Two stereo speakers
- Storage shelf for lunch or toolbox
- Color LCD monitor
- Adjustable armrest
- Height-adjustable joystick consoles
- Neutral lever (lock out) for all controls
- Travel control pedals with removable hand levers
- Capability of installing two additional pedals
- Two power outlets, 10 amp (total)
- Laminated glass front window and tempered other windows
- Cab hatch emergency exit
- Sunscreen
- Parallel wiper
- Air pre-filter
- Air seat with backrest and heater
- Seatbelt, retractable (50 cm width)
- Bi-level air conditioner (auto) with defroster (pressurized function)
- Joysticks with three on/off switches and one modulation switch
- 12-volt radio ready
- One piece front windshield (L)
- 70/30 split front windshield (LN)

COUNTERWEIGHT

- 4.9 mt

ELECTRICAL

- 80 amp alternator
- Circuit breaker
- Capability to electrically connect a beacon

ENGINE

- C9.3 diesel engine
- Biodiesel capable
- Meets EU Stage IIIB emission standards
- 2300 m altitude capability
- Electric priming pump
- Automatic engine speed control
- Standard, economy and high power modes
- Two-speed travel
- Side-by-side cooling system
- Radial seal air filter
- Primary filter with water separator and water separator indicator switch
- Fuel differential indicator switch in fuel line
- 2×4 micron main filters and 1×10 micron primary filter in fuel line
- Water level indicator for water separator
- Starting kit, cold weather, -32° C
- Jump start receptacle
- Quick drains, engine and hydraulic oil

FRONT LINKAGE

- Bucket linkage, DB family with lifting eye
- HD 6.5 m reach boom with left- and right-side light
- Heavy Duty Reach 3.2 m stick

HYDRAULIC SYSTEM

- Automatic swing parking brake
- High performance hydraulic return filter
- Capability of installing additional auxiliary pump and circuit
- Boom lowering control device and stick lowering check valve
- Boom and stick medium pressure lines
- Boom and stick high pressure lines
- Boom and stick QC lines
- Tool control system

LIGHTS

- Working lights, cab mounted with time delay
- Halogen boom and cab lights with time delay
- Exterior lights integrated into storage box

UNDERCARRIAGE

- 600 mm triple grouser shoes (LN)
- 600 mm double grouser shoes (L)
- Grease Lubricated Track (GLT2) with resin seal
- Towing eye on base frame
- Guard, heavy-duty bottom
- Swivel guard
- Full length track guiding guard
- Heavy-duty travel motor protection
- Heavy duty rollers

SECURITY

- Cat one key security system
- Door locks
- Cap locks on fuel and hydraulic tanks
- Lockable external tool/storage box
- Signaling/warning horn
- Secondary engine shutoff switch
- Openable skylight for emergency exit
- Rearview camera

TECHNOLOGY

- Product Link

336E L/LN H Optional Equipment

Optional Equipment

Optional equipment may vary. Consult your Cat dealer for details.

HYDRAULIC SYSTEM

- Capability to install Boom lowering control device and stick lowering check valve
- Quick Coupler, Hydraulic

CAB

- Rain protector
- HID lights, cab mounted

FRONT LINKAGE

- Bucket linkage, DB family without lifting eye
- Heavy Duty Reach 2.8 m stick

UNDERCARRIAGE

- 600 mm double grouser
- 600 mm triple grouser
- 600 mm HD triple grouser
- 700 mm triple grouser
- 800 mm triple grouser
- 850 mm triple grouser
- Center track guiding guard
- Segmented track guiding guard

SECURITY

- Falling Object Guard (FOGS, bolt-on)
- Cat MSS (anti-theft device)

For more complete information on Cat products, dealer services, and industry solutions, visit us on the web at www.cat.com

© 2013 Caterpillar Inc.
All rights reserved

Materials and specifications are subject to change without notice. Featured machines in photos may include additional equipment. See your Cat dealer for available options.

CAT, CATERPILLAR, SAFETY.CAT.COM, their respective logos, "Caterpillar Yellow" and the "Power Edge" trade dress, as well as corporate and product identity used herein, are trademarks of Caterpillar and may not be used without permission.

AEHQ6948-02 (08-2013)
Replaces AEHQ6948-01
(Europe)

